

## Solitaire Chess®

Welcome to Solitaire Chess, the single-player logic game that uses the rules of chess in simplified form to create a diabolical brainteaser challenge!

If you've never played chess before, no problem – Solitaire Chess is an inviting way to hone your skills and build your chess-playing strategies. If you are a chess expert, good luck to you! We think the upper levels of Solitaire Chess will be worthy of your abilities. For everyone who enjoys a good puzzle challenge... Solitaire Chess is for you!

1 Plastic Chess Board  
(w/ Storage drawer)

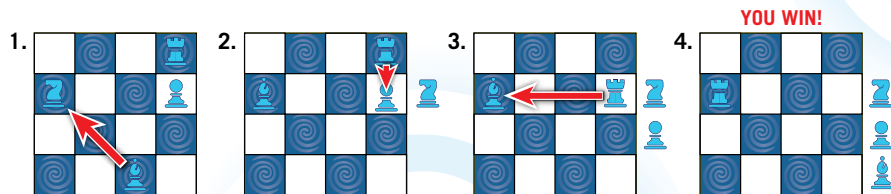


10 Chess Pieces  
(1 King, 1 Queen, 2 Knights, 2 Bishops, 2 Rooks, 2 Pawns)

Instruction Booklet  
Including Hints & Solutions

## Your Goal:

Capture the chess pieces until only one piece remains on the board.



## Setup:

1. Choose a challenge mat and place it on the game tray (to slide pieces), or as the top challenge in the storage slot (for a more secure placement).
2. Place chess pieces on the challenge mat as indicated.

## Steps To Play:

1. Move the chess pieces according to the movement rules (pages 6-7)\*  
Each move MUST result in a captured piece. Think ahead and plan your moves!
2. If you are left with two or more pieces on the board, reset the challenge and try again.
3. When there is only one piece left on the board, YOU WIN!

\*Movements are the same as in standard chess.

## Comparing Solitaire Chess® to Standard Chess:

Solitaire Chess is a single-player logic puzzle, not a chess game. Recreational mathematicians classify it as a “chess task,” meaning that it uses the rules of chess with appropriate adaptations.

With Solitaire Chess, the basic piece movements are the same as with standard chess. When you evaluate each challenge and plan your strategy, you are thinking the same way you do when you are playing chess. However, chess purists will notice differences between the two games.

### The differences are:

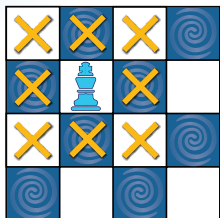
- Solitaire Chess is a single-player game; all the pieces are the same color.
- Every move you make must result in a capture.
- Pawns can be placed anywhere on the board. They may only move up the board by diagonally capturing another piece.
- Pawns are not promoted when they reach the top rank (top row).
- There is no “check” rule for the King.
- By our design, every challenge that uses a King will end with the King as the last remaining piece. (This is not a rule; it is a hint for you.)

## Strategies to Try if You Get Stuck:

Solitaire Chess® can be challenging! But as you play, you will get the hang of it and you’ll be amazed at how quickly your skills improve. When playing, here are some solving strategies that might help you.

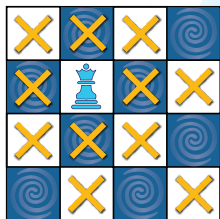
- Look for a piece that cannot capture. You can then work backwards, because at some point during the challenge, this piece will need to be captured.
- Look for a capture “sweep,” where all other pieces are captured by one piece. For example, all the pieces might be captured by the Queen.
- When the King is included in a challenge, you immediately know it will be the last piece on the board...because we have designed the challenges to work this way.
- If you are an experienced chess player, look for “unnatural” moves, such as capturing the Queen first.
- Examine the Knight very carefully. It is one of the hardest pieces to analyze because of its L-shaped movement.
- Examine all the possible captures on the board, systematically and completely. Make sure you don’t miss any possibilities...every challenge does have a solution!
- Use our hint system (pages 9-12) to give yourself a boost.

## Movement Rules: See challenge icon key on page 8.

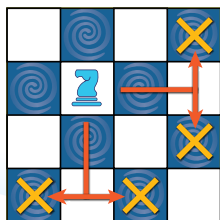


**King** captures after moving exactly one square horizontally, vertically or diagonally.

The challenges are designed such that in the solution the King will never be captured.

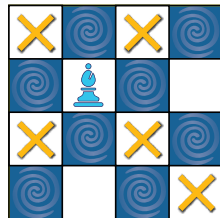


**Queen** captures after moving across any number of vacant squares horizontally, vertically, or diagonally.



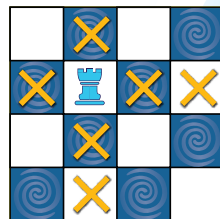
**Knights** capture after moving in an “L” (or inverted “L”) with two steps in one direction, a 90° turn and one step in the new direction.

Knights are the only pieces that can jump over other pieces. They capture only the piece that occupied the final square.

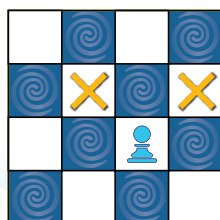


**Bishops** capture after moving across any number of vacant squares diagonally.

Bishops always remain on their original square color.



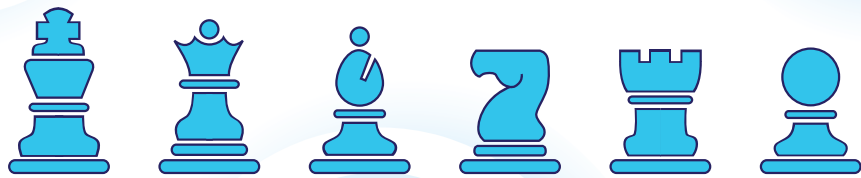
**Rooks** capture after moving across any number of vacant squares vertically or horizontally.



**Pawns** capture after moving diagonally up one space. Pawns can only move upward.

Unlike regular chess, pawns are NOT promoted when they reach the top row.

## Solitaire Chess® Challenge Icons & Pieces:



King

Queen

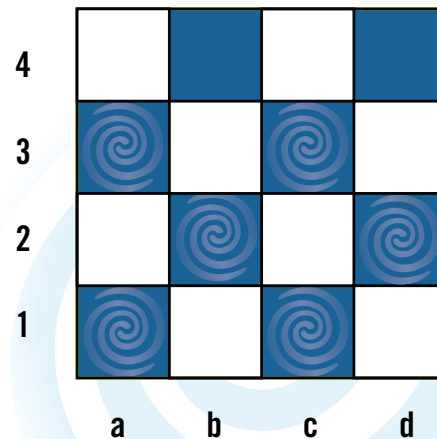
Bishop

Knight

Rook

Pawn

## Chess Board Rank and File (Rows and Columns):

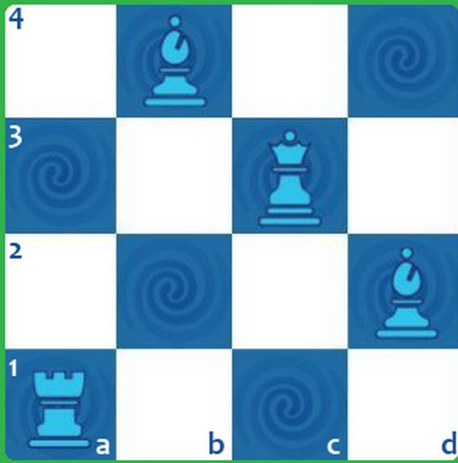


Below are 40 challenges with varying levels of difficulty: Beginner, Intermediate, Advanced, and Expert.

Can you solve them all?.

# Solitaire Chess

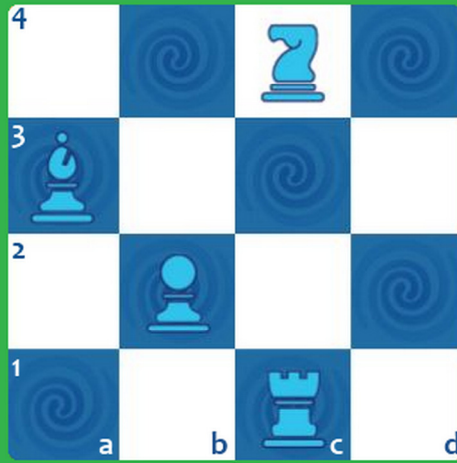
1F



Beginner

# Solitaire Chess

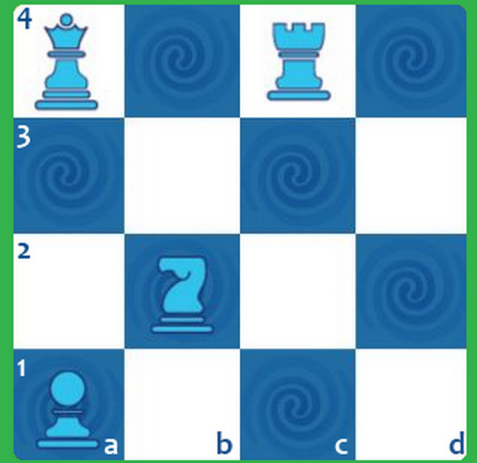
2F



Beginner

# Solitaire Chess

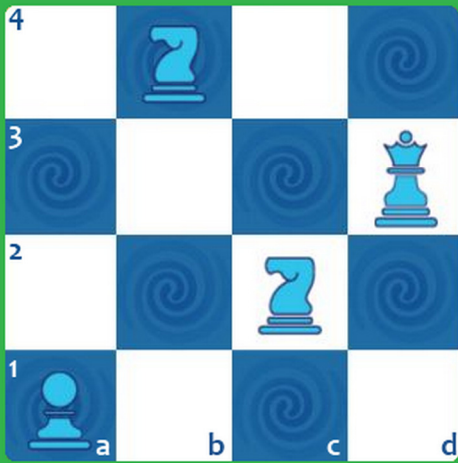
3F



Beginner

# Solitaire Chess

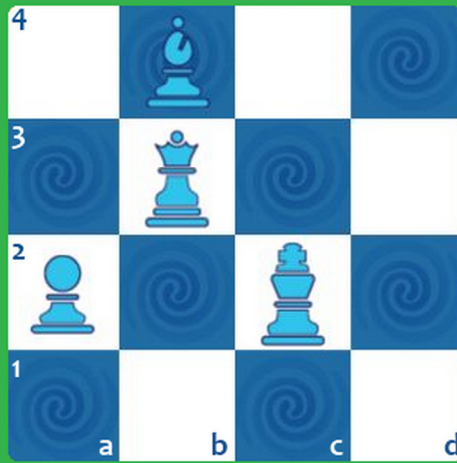
4F



Beginner

# Solitaire Chess

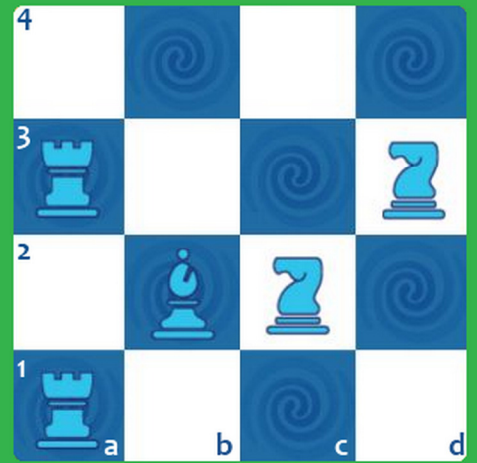
5F



Beginner

# Solitaire Chess

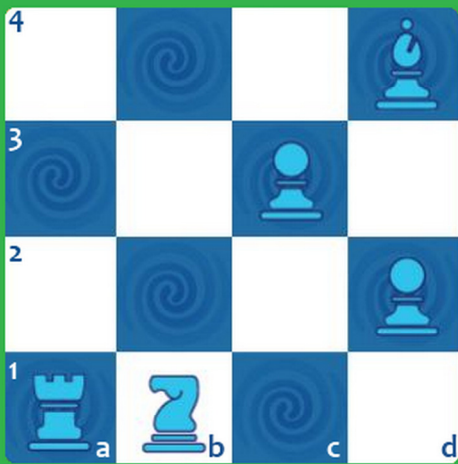
6F



Beginner

# Solitaire Chess

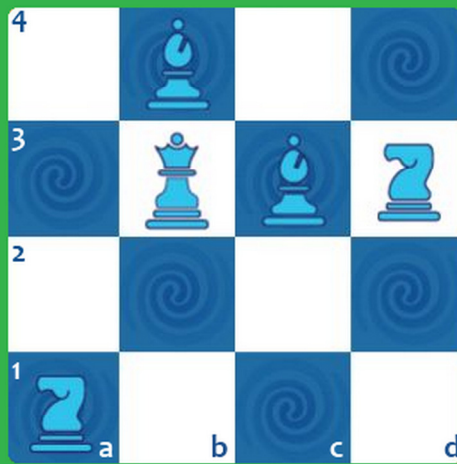
7F



Beginner

# Solitaire Chess

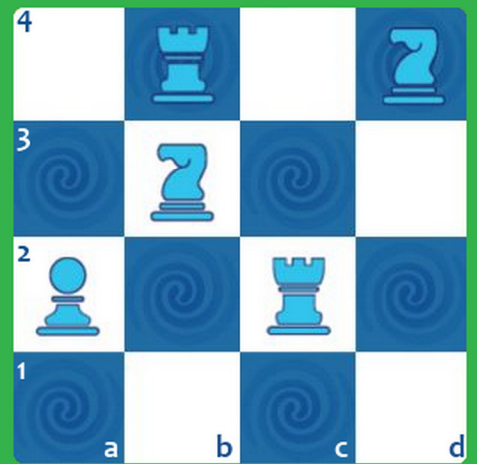
8F



Beginner

# Solitaire Chess

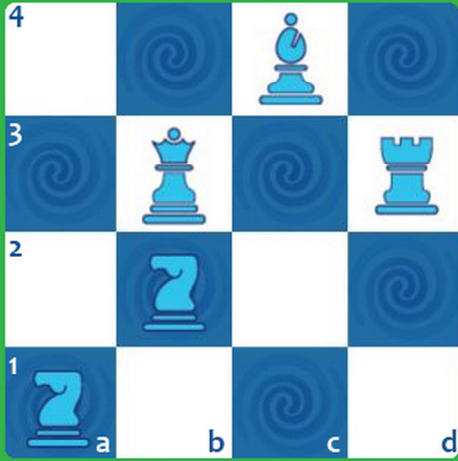
9F



Beginner

# Solitaire Chess

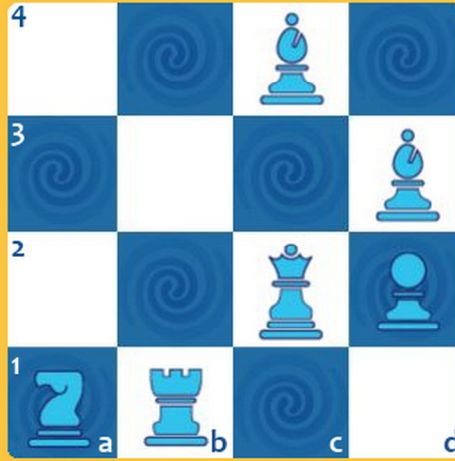
10F



Beginner

# Solitaire Chess

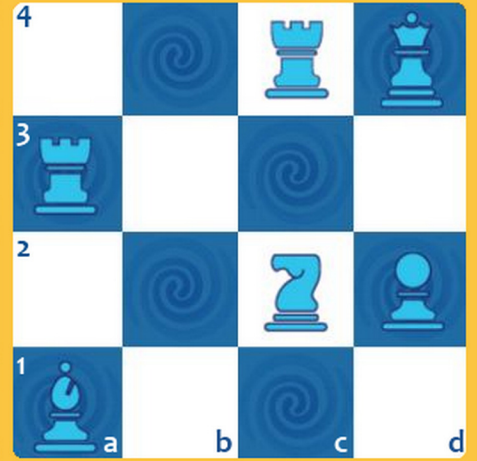
1F



Intermediate

# Solitaire Chess

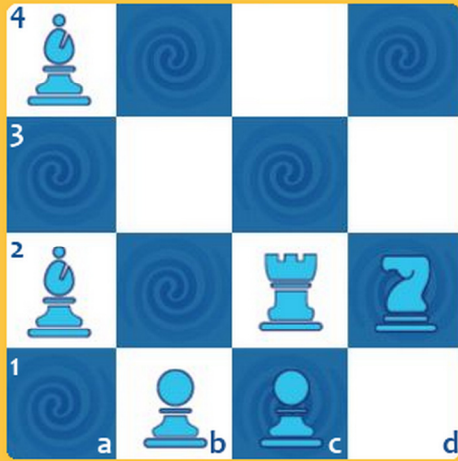
2F



Intermediate

# Solitaire Chess

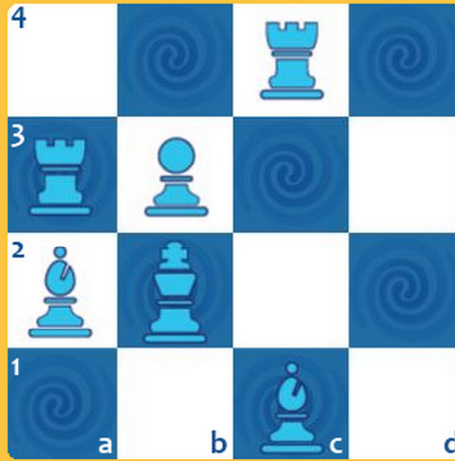
3F



Intermediate

# Solitaire Chess

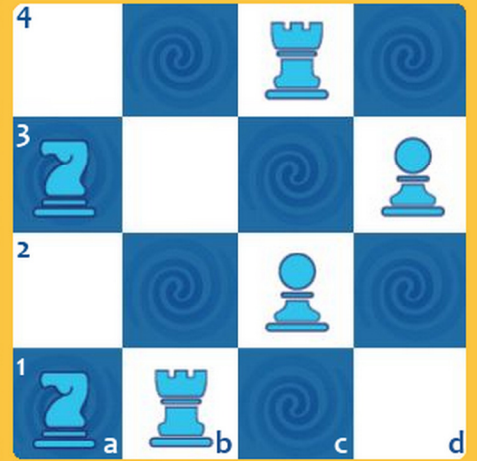
4F



Intermediate

# Solitaire Chess

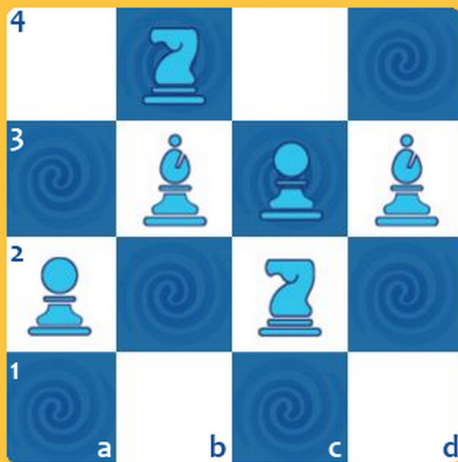
5F



Intermediate

# Solitaire Chess

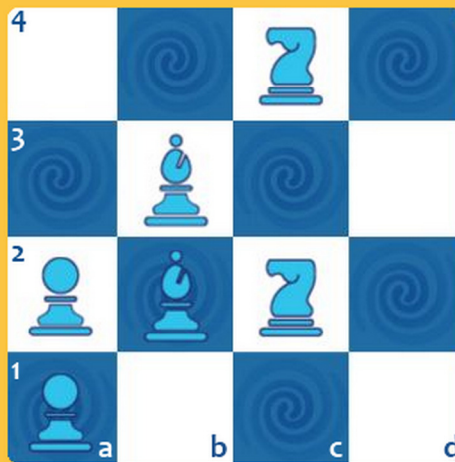
6F



Intermediate

# Solitaire Chess

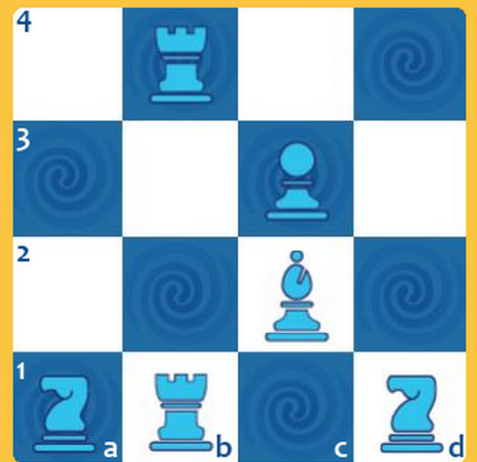
7F



Intermediate

# Solitaire Chess

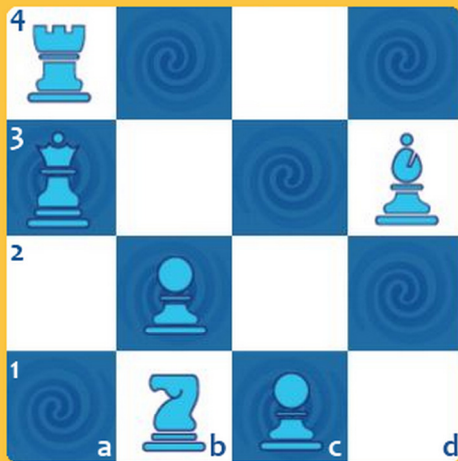
8F



Intermediate

# Solitaire Chess

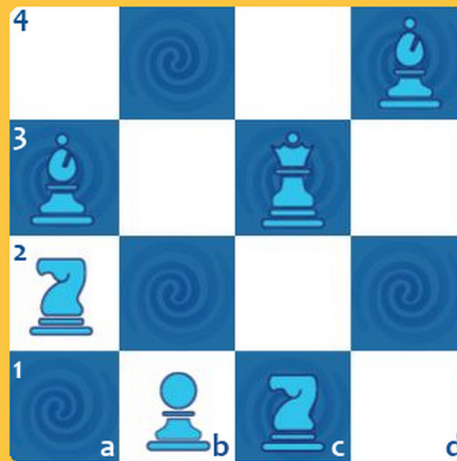
9F



Intermediate

# Solitaire Chess

10F



Intermediate

# Solitaire Chess

1F



Advanced

# Solitaire Chess

2F



Advanced

# Solitaire Chess

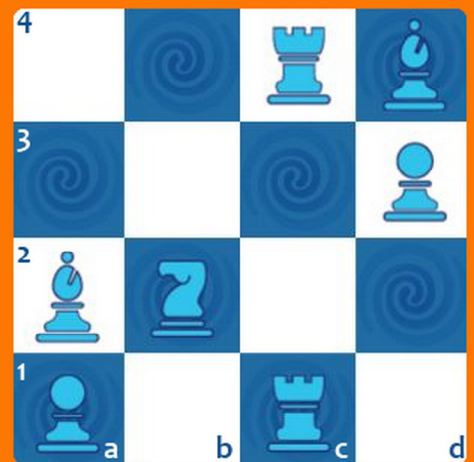
3F



Advanced

# Solitaire Chess

4F



Advanced

# Solitaire Chess

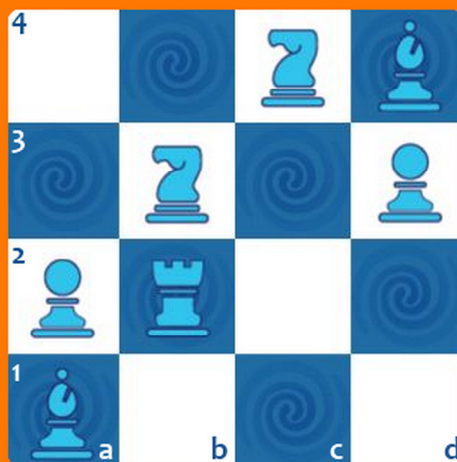
5F



Advanced

# Solitaire Chess

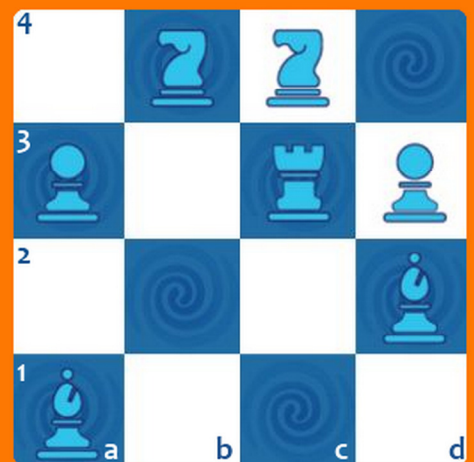
6F



Advanced

# Solitaire Chess

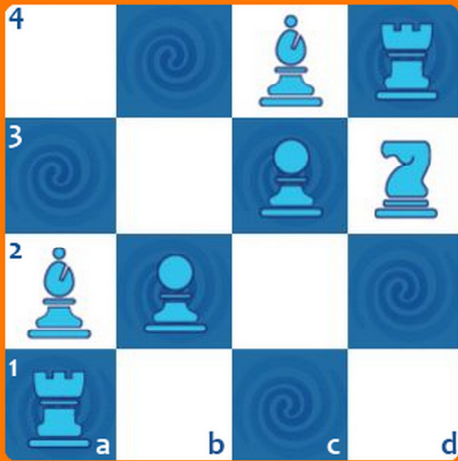
7F



Advanced

# Solitaire Chess

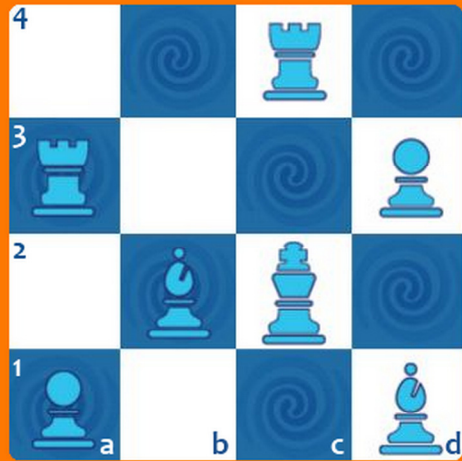
8F



Advanced

# Solitaire Chess

9F



Advanced

# Solitaire Chess

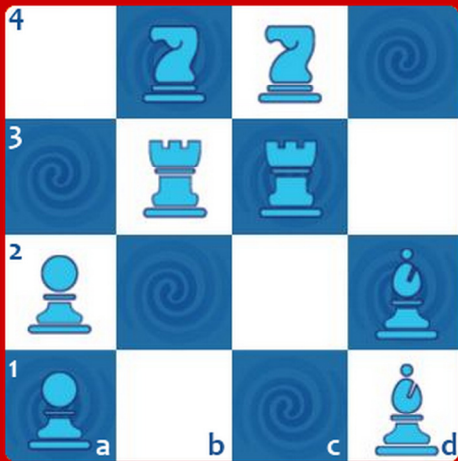
10F



Advanced

# Solitaire Chess

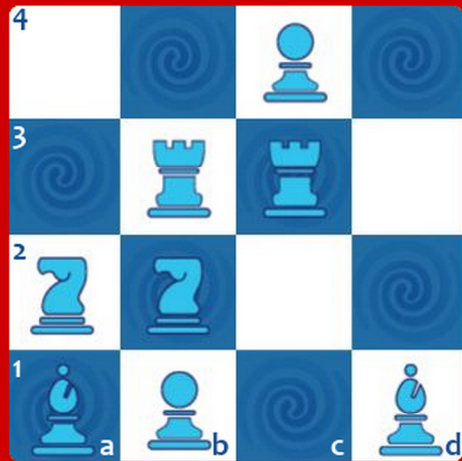
1F



Expert

# Solitaire Chess

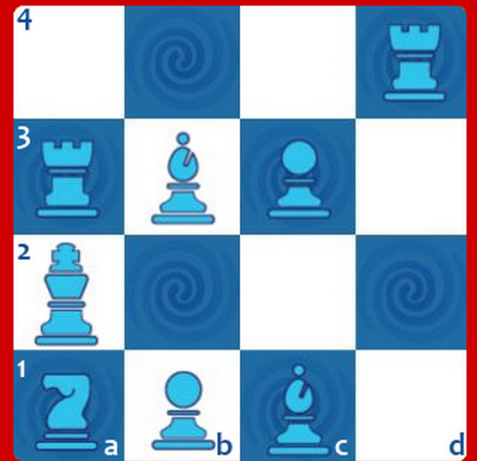
2F



Expert

# Solitaire Chess

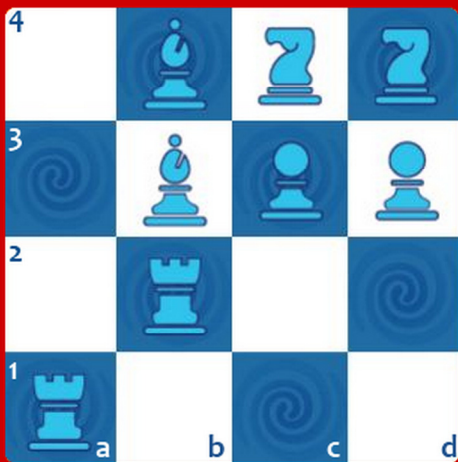
3F



Expert

# Solitaire Chess

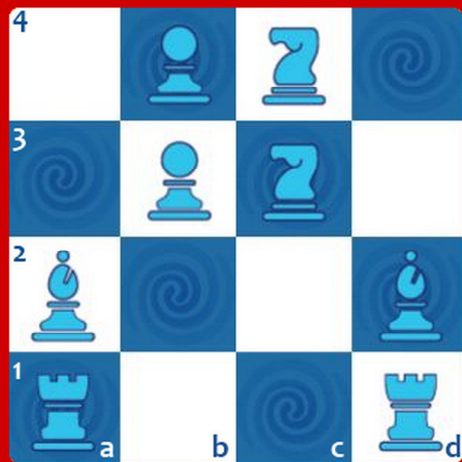
4F



Expert

# Solitaire Chess

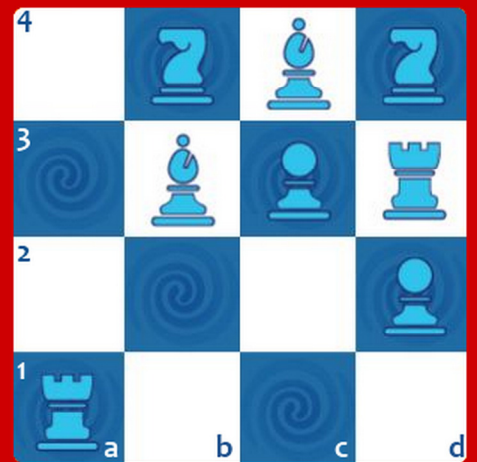
5F



Expert

# Solitaire Chess

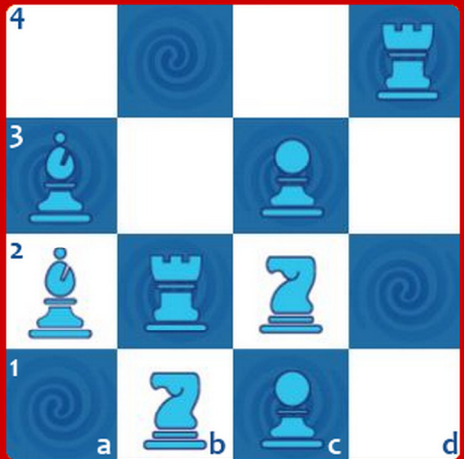
6F



Expert

# Solitaire Chess

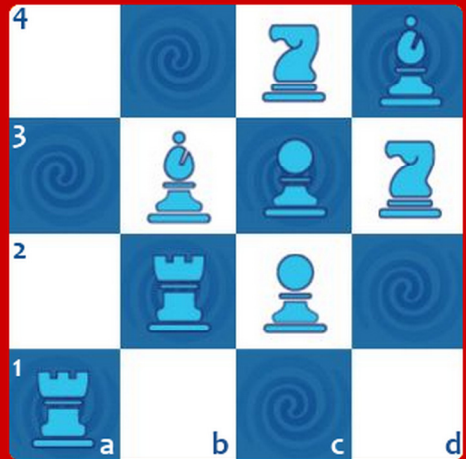
7F



Expert

# Solitaire Chess

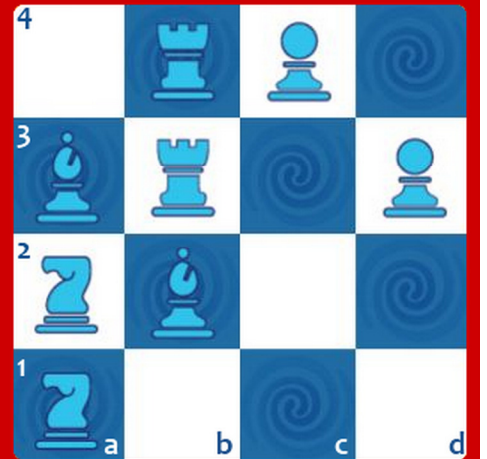
8F



Expert

# Solitaire Chess

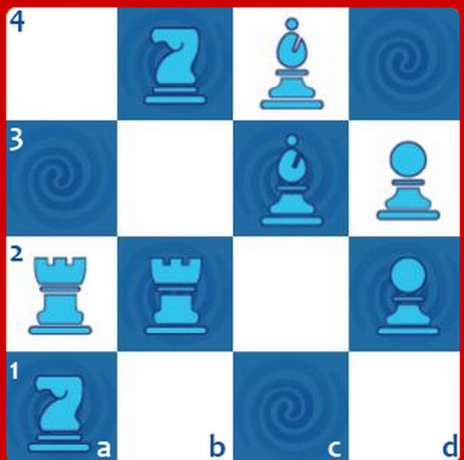
9F



Expert

# Solitaire Chess

10F



Expert