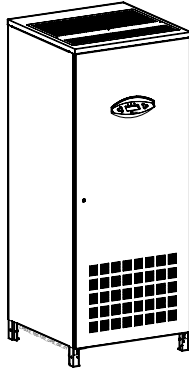


GE Consumer & Industrial Power Protection



Schematics
Uninterruptible Power supply

Digital Energy™ *LP 33 Series*

100 & 120 kVA
400 Vac CE / Series 1

GE Consumer & Industrial SA
General Electric Company
CH – 6595 Riazzino (Locarno)
Svizzera
T +41 (0)91 / 850 51 51
F +41 (0)91 / 850 51 44
www.gedigitalenergy.com



GE imagination at work



Certified
Quality System
ISO 9001
Reg.No.CSQ 9130.GELE

Model: **LP 33 Series / 100 & 120 kVA / S1**

Date of issue: 01.10.2006

File name: EDW_LPS_33E_M10_M12_1GB_V010

Revision: 1.0

Identification No.:

Up-dating

Revision	Concern	Date

TECHNICAL DIAGRAMS

Table of contents

Drawing title	Drawing number	
COMPONENTS & VIEWS	393603	page 1/5
FUNCTIONAL DRAWING (common input mains 1-2)	393603	page 2/5
FUNCTIONAL DRAWING (two input mains 1-2).....	393603	page 3/5
Power bridge 2 rectifier / inverter 2pulse / SSM	393603	page 4/5
Power bridge 2 rectifier / inverter 6pulse / SSM	393603	page 5/5
PARALLEL CONNECTION (option)	392453	page 1/1

COMPONENTS CHART

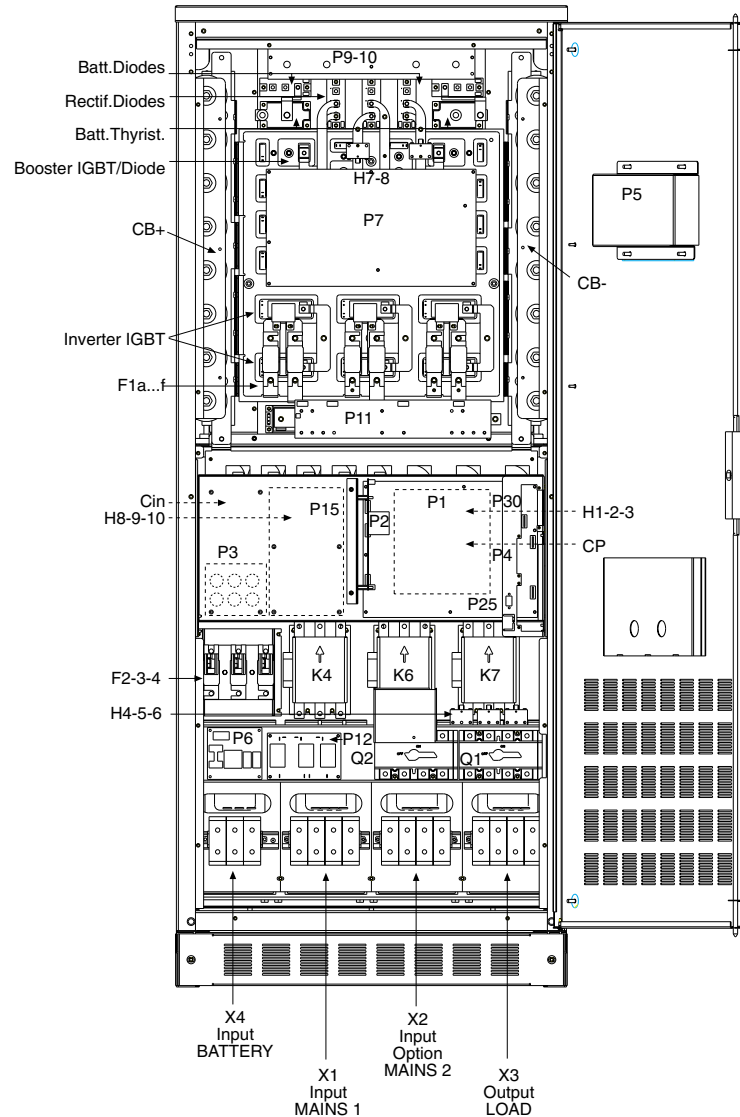
100kVA 120kVA

CB+ / --	2x(7x4700uF/450V)	2x(8x4700uF/450V)
C in-ph	3x (2x100uF+1x50uF)	3x (3x100uF)
C in_battery	2x (2x100uF+1x50uF)	2x (3x100uF)
CP	3x (2x250uF)	3x (2x300uF)
F1a...f	400 A	400 A
F2-3-4	160 A	200 A
H1-2-3-4-5-6	400A/4V	400A/4V
H7-8	400A/4V	400A/4V
H9-10-11 (only with Opt. 6 Pulses)	400A/4V	400A/4V
K4-6	250 A (220/230VAC)	250 A (220/230VAC)
K7	250 A (24VDC)	250 A (24VDC)
Q1-2	200 A	200 A
L1-2-3	BP-B-1223	BP-B-1224
L5-6-7	BP-B-1233	BP-B-1234
L8-9	BP-B-1228	BP-B-1229
L10-11	BP-B-1236	BP-B-1237
L12-13-14	BP-F-1240	BP-F-1241
L15-16	BP-B-1172	BP-B-1172
L17-18-19(Opt.)	BP-B-1248	BP-B-1248
L20	BP-B-1204	BP-B-1204
M1-2-3	815 mc/h	815 mc/h
P1 Control board	IM0094	IM0094
P2 Power supply	IM0109	IM0109
P3 Redundant power supply	IM0098	IM0098
P4 Customer interface (Opt.)	IM0005	IM0005
P5 Panel board	IM0053(0068 opt.)	IM0053(0068 opt.)
P6 Fan control board	IM0113	IM0113
P7 Booster driver	IM0110(0107 opt.)	IM0110(0107 opt.)
P8 Inverter driver	IM0102	IM0102
P9 Battery charger	IM0093	IM0093
P10 Electr. for battery charger	IM0099	IM0099
P11 SSM driver	IM0095	IM0095
P12 Minimal load for bypass	IM0046	IM0046
P13 RPA board (opt.)	IM0026	IM0026
P15 K7 Power interface	IM0100	IM0100
P16(P20 Opt.) Interf.suppress.board	IM0135	IM0135
P17-18-19(P21 Opt.)Interf.suppr.b.	IM0134	IM0134
P23 Interface suppressor board	IM0104	IM0104
P25 Relay card	0996	0996
P30 SNMP card (Opt.)	IM0025	IM0025
P34 RPA adapter (Opt.)	IM0031	IM0031

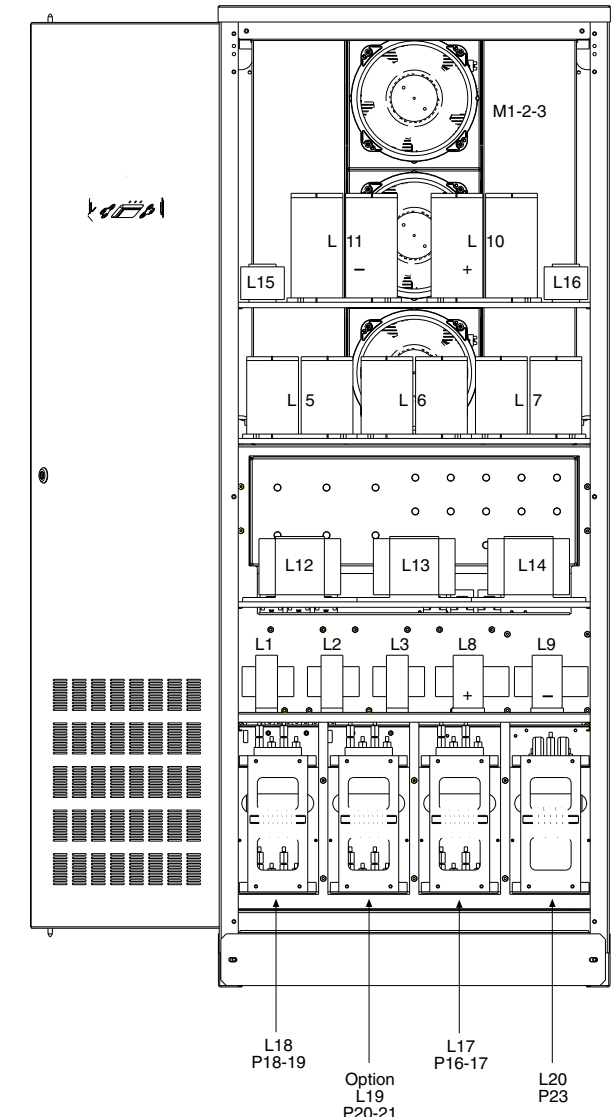
Diode BATTERY	D4,5	220A / 1200V	310A / 1200V
Diode RECTIFIER	D1,2,3	150A / 1200V	170A / 1200V
IGBT INVERTER	T7,8,9 a / b	2x200A / 1200V	2x300A / 1200V
IGBT/Diode BOOSTER	T1...6 a / b	2x195A / 600V	2x300A / 600V
Bleeder Resistors		22x27kOhm/10W	24x27kOhm/10W
Snubber IGBT		3x2uF / 1000VDC	3x2uF / 1000VDC
Thyristors BATTERY	GT1,2	330A/1200V	330A/1200V
Thyristors BYPASS	GT4,5,6	210A / 1200V	210A / 1200V

UPS CABINET

FRONT VIEW



REAR VIEW



COMPONENTS & VIEWS



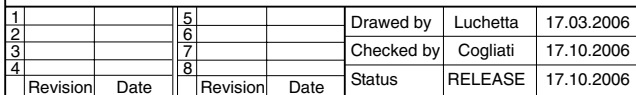
LP_CE
100_120 kVA

REPLACE: Serie 0

SERIES **1** Code **393603** Page 1 of Pages 5

1		5		Drawn by	Luchetta	08.08.2006
2		6		Checked by	Cogliati	17.10.2006
3		7		Status	RELEASE	17.10.2006
4		8				
Revision	Date	Revision	Date			

All rights for trasmission, duplicating or reprinting reserved

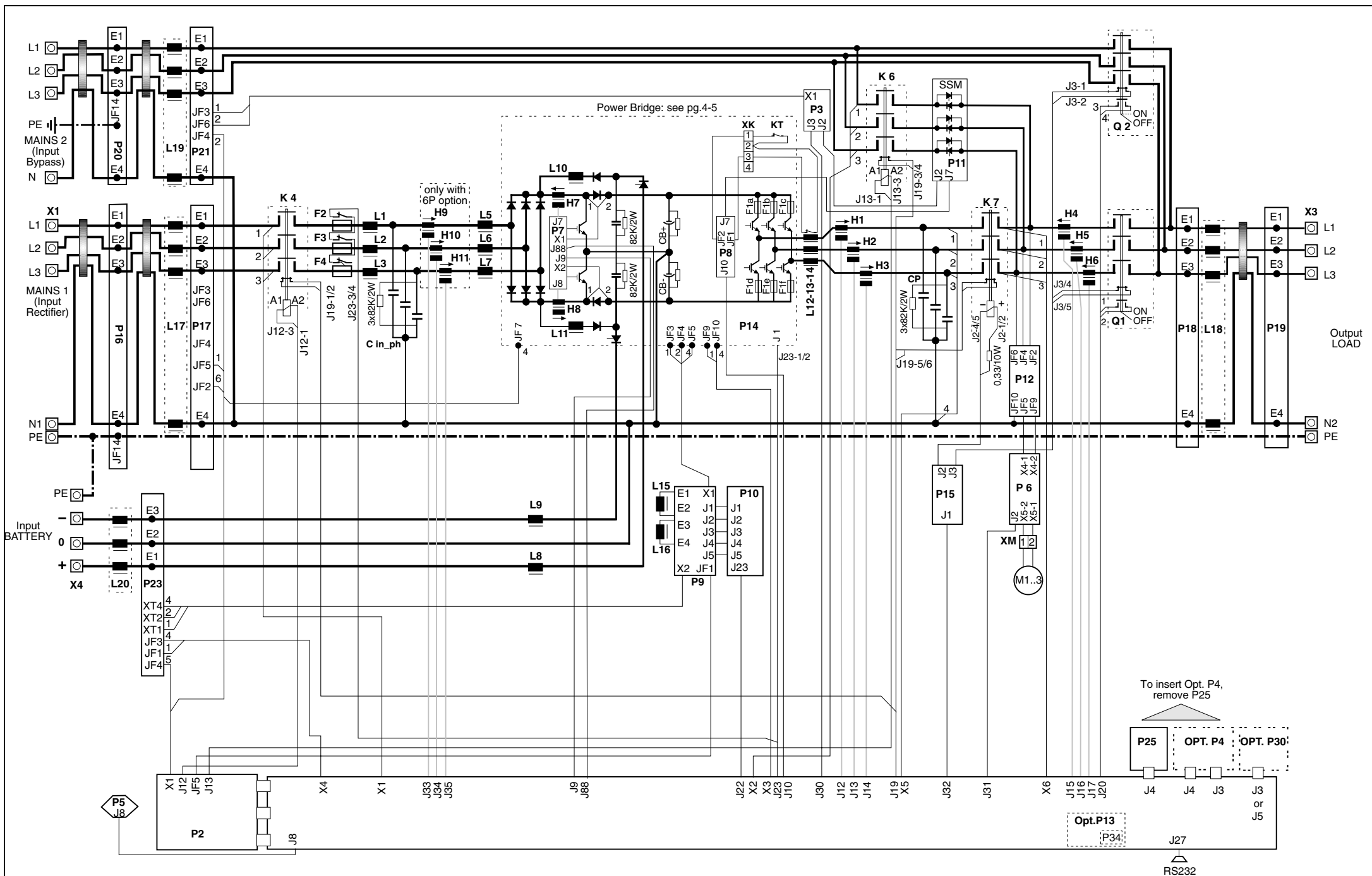


All rights for transmission, duplicating or reprinting reserved



REPLACE: Serie 0

Page 2
of Pages 5



1		5		Drawn by	Luchetta	17.03.2006
2		6		Checked by	Cogliati	17.10.2006
3		7		Status	RELEASE	17.10.2006
4		8				

FUNCTIONAL DRAWING

TWO INPUT MAINS 1-2

All rights for trasmission, duplicating or reprinting reserved

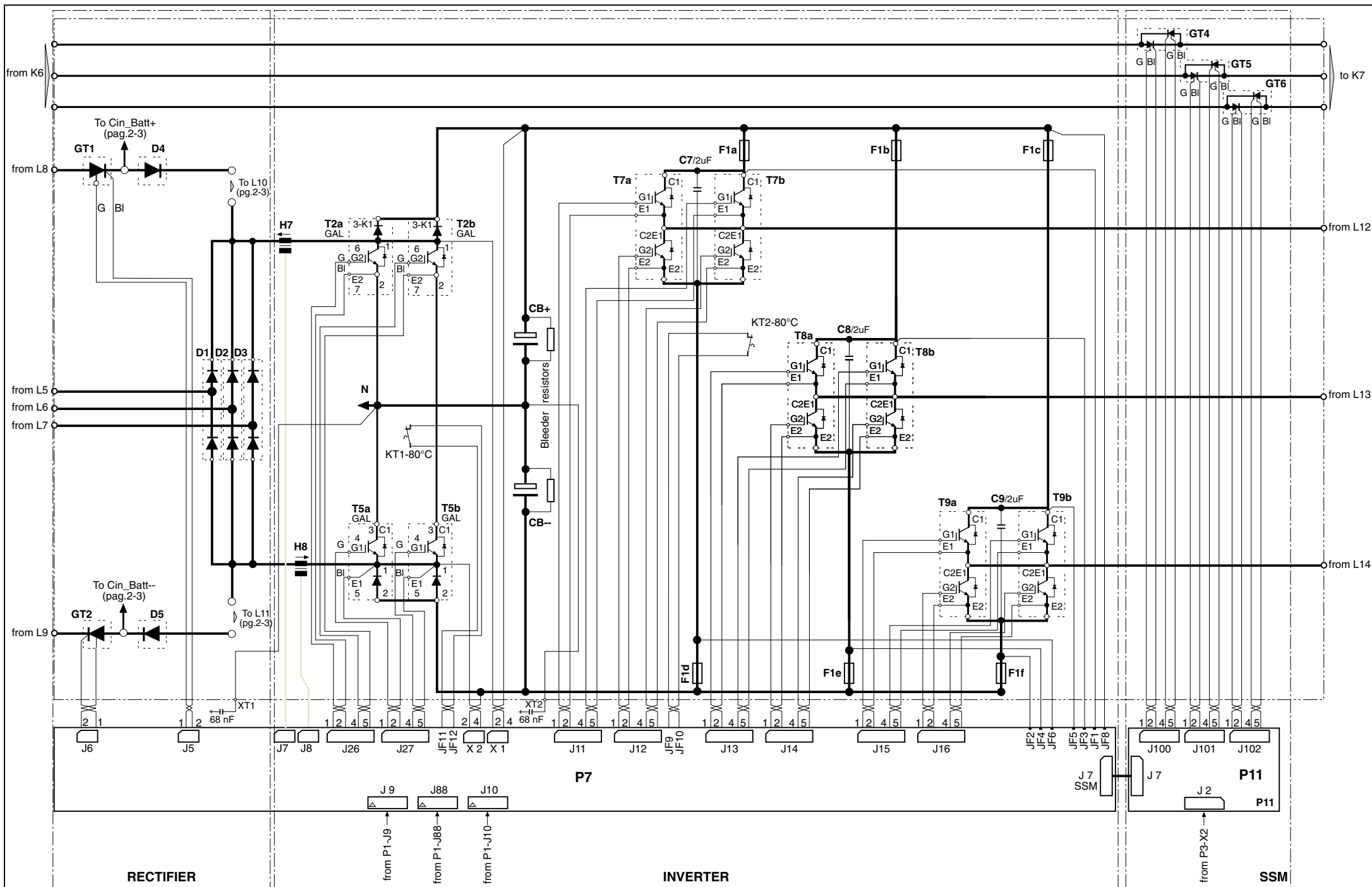


LP_CE
100-120 kVA

REPLACE: Serie 0

SERIES **1** Code **393603**

Page **3**
of Pages 5





A



E

F