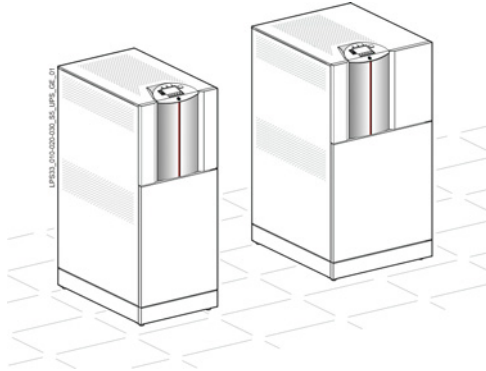


GE Digital Energy  
Power Quality



## UPS Schematic Diagrams

Uninterruptible Power supply

**Digital Energy™**

***LP 33 Series***

10 – 20 – 30 – 40 kVA  
400 Vac CE / Series 5

**GE Consumer & Industrial SA**

General Electric Company  
CH – 6595 Riazzino (Locarno)  
Svizzera

T +41 (0)91 / 850 51 51

F +41 (0)91 / 850 51 44

[www.gedigitalenergy.com](http://www.gedigitalenergy.com)



GE imagination at work



Certified  
Quality System

**ISO 9001**

Model: **LP 33 Series 10 - 20 - 30 - 40 kVA / Series 5**

Date of issue: 05.05.2009

File name: EDW\_LPS\_33E\_10K\_40K\_5GB\_V020

Revision: 2.0

Identification No.:

**Up-dating**

Revision	Concern	Date
2.0	ECN 1303 for LP 33 Series 40 kVA	04.05.2009

## UPS Schematics Diagrams

### Table of contents

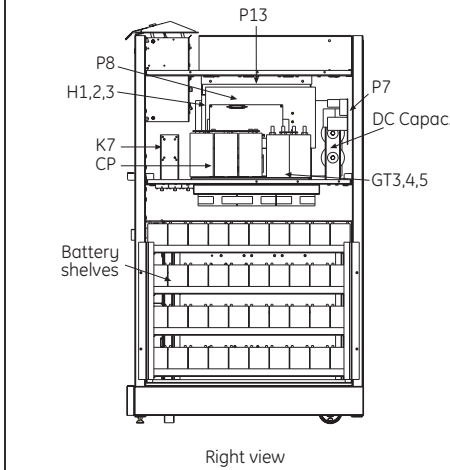
**Drawing title****Drawing number**

Components & Views	LP 33 Series / 10-20-30-40kVA	332 103	page 1/6
UPS schematic diagram standard UPS	LP 33 Series / 10-20-30kVA	332 103	page 2/6
UPS schematic diagram dual input UPS	LP 33 Series / 10-20-30kVA	332 103	page 3/6
UPS schematic diagram standard UPS	LP 33 Series / 40kVA	332 103	page 4/6
UPS schematic diagram dual input UPS	LP 33 Series / 40kVA	332 103	page 5/6
RPA connection & Emergency OFF	LP 33 Series / 10-20-30-40kVA	332 103	page 6/6

## COMPONENTS CHART

	10kVA	20kVA	30kVA	40kVA
<b>Inverter DC Capacitors</b>				
<b>Booster DC Capacitors</b>	2x4700uF/450V	4x4700uF/450V	2x4700uF/450V	2x4700uF/450V
<b>CP (AC Capacitors)</b>	3 x 50uF	3 x 50uF	3 x 150uF	3 x 200uF
<b>F1-2-3</b>	20 A	40 A	63 A	80 A
<b>F9-10-11</b>	25 A	50 A	80 A	100 A
<b>F1-a..f (Inverter fuses)</b>	50 A	100 A	160A	160A
<b>H1-2-3-4-5-6</b>	100A/4V (2Wdg)	100A/4V	100A/4V	200A/4V
<b>K4 (230V)</b>	32 A	32 A	50 A	60 A
<b>K6 (230V)</b>	32 A	32 A	50 A	60 A
<b>K7 (24VDC)</b>	50 A	50 A	50 A	60 A
<b>Q1-2</b>	25 A	32 A	63 A	63 A
<b>L1-2-3 (Filter AC)</b>	BP-B-1034	BP-B-1035	BP-B-1036	BP-B-1274
<b>L5-6-7-10-11 (Booster Choke)</b>	BP-B-1043	BP-B-1044	BP-B-1045	BP-B-1275
<b>L8-9 (DC Filter)</b>	BP-B-1040	BP-B-1041	BP-B-1042	BP-B-1276
<b>L12-13-14 (Inverter Choke)</b>	BP-B-1071	BP-B-1072	BP-B-1073	BP-B-1154
<b>M (Fan)</b>	3 x 150 mc/h		3x(150+186) mc/h	4x237(24Vdc)+1x150mc/h
<b>P1</b> Power supply	IM 0056	IM 0056	IM 0056	IM 0056
<b>P2</b> Mainboard	IM 0059	IM 0059	IM 0059	IM 0059
<b>P3</b> IN/OUT Filter	IM 0020	IM 0027	IM 0028	IM 0028
<b>P5</b> Rect/Booster/Batt.Thyr. Board	IM 0069	IM 0052	IM 0019	IM 0019
<b>P6</b> Booster/Batt.Thyr. Driver			IM 0009	IM 0009
<b>P7</b> Battery cahrger	IM 0058	IM 0058	IM 0058	IM 0058
<b>P8</b> Inverter power board	IM 0011	IM 0011	IM 0022	IM 0022
<b>P9</b> Inverter driver	IM 0008-10	IM 0008-20	IM 0008-30	IM 0008-30
<b>P10</b> Graphic display board	IM 0143	IM 0143	IM 0143	IM 0143
<b>P13</b> DC Capacitors board			IM 0021	IM 0021
<b>P14</b> Booster Rectifier	IM 0055			
<b>P18</b> SSM Driver	IM 0040	IM 0040	IM 0040	IM 0040
<b>P19</b> Relay card	IM 0996	IM 0996	IM 0996	IM 0996
<b>OPTION Board</b>				
<b>P4</b> Customer interface	IM 0005	IM 0005	IM 0005	IM 0005
<b>P15</b> RPA Board	IM 0026	IM 0026	IM 0026	IM 0026
<b>P16</b> Connector adapter for RPA	IM 0031	IM 0031	IM 0031	IM 0031
<b>P17</b> SNMP Card	IM 0025	IM 0025	IM 0025	IM 0025
<b>P21</b> Battery charger (Extension)	IM 0058	IM 0058	IM 0058	IM 0058
<b>Rectifier DIODE</b>	1 x 76A/1200V	3 x 102A/1200V	3 x 102A/1200V	3 x 102A/1200V
<b>Booster IGBT/Diode</b>	1 x 75A/600V	2 x 75A/600V	4 x 75A/600V	4 x 75A/600V
<b>Booster Diode/IGBT</b>	1 x 75A/600V	2 x 75A/600V	4 x 75A/600V	4 x 75A/600V
<b>Battery Thyristors</b>	2 x 40A/1200V	2 x 95A/1200V	2 x 95A/1200V	2 x 95A/1200V
<b>Inverter IGBT</b>	3 x 50A/1200V	3 x 100A/1200V	3 x 150A/1200V	3 x 150A/1200V
<b>Bypass Thyristors</b>	3 x 27A/1200V	3 x 90A/1200V	3 x 90A/1200V	3 x 90A/1200V

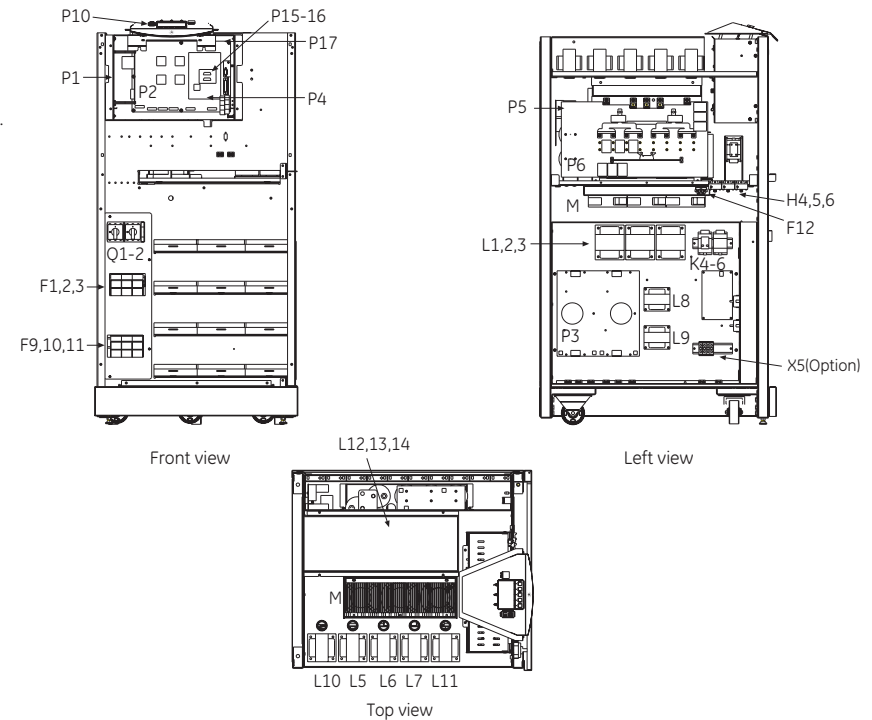
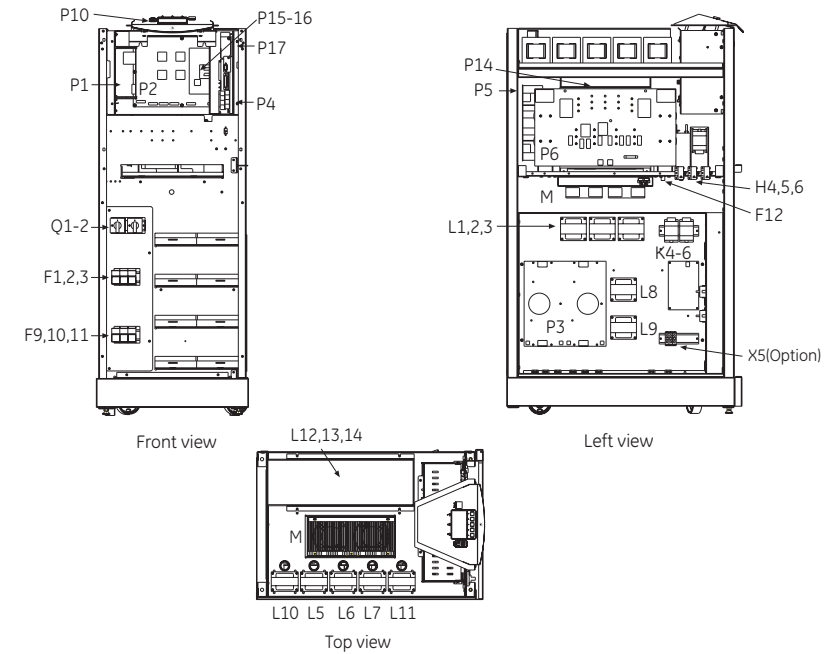
### UPS Cabinet 10-20kVA



### UPS Cabinet 30-40kVA

## COMPONENTS & VIEWS

All rights for trasmission, duplicating or reprinting reserved



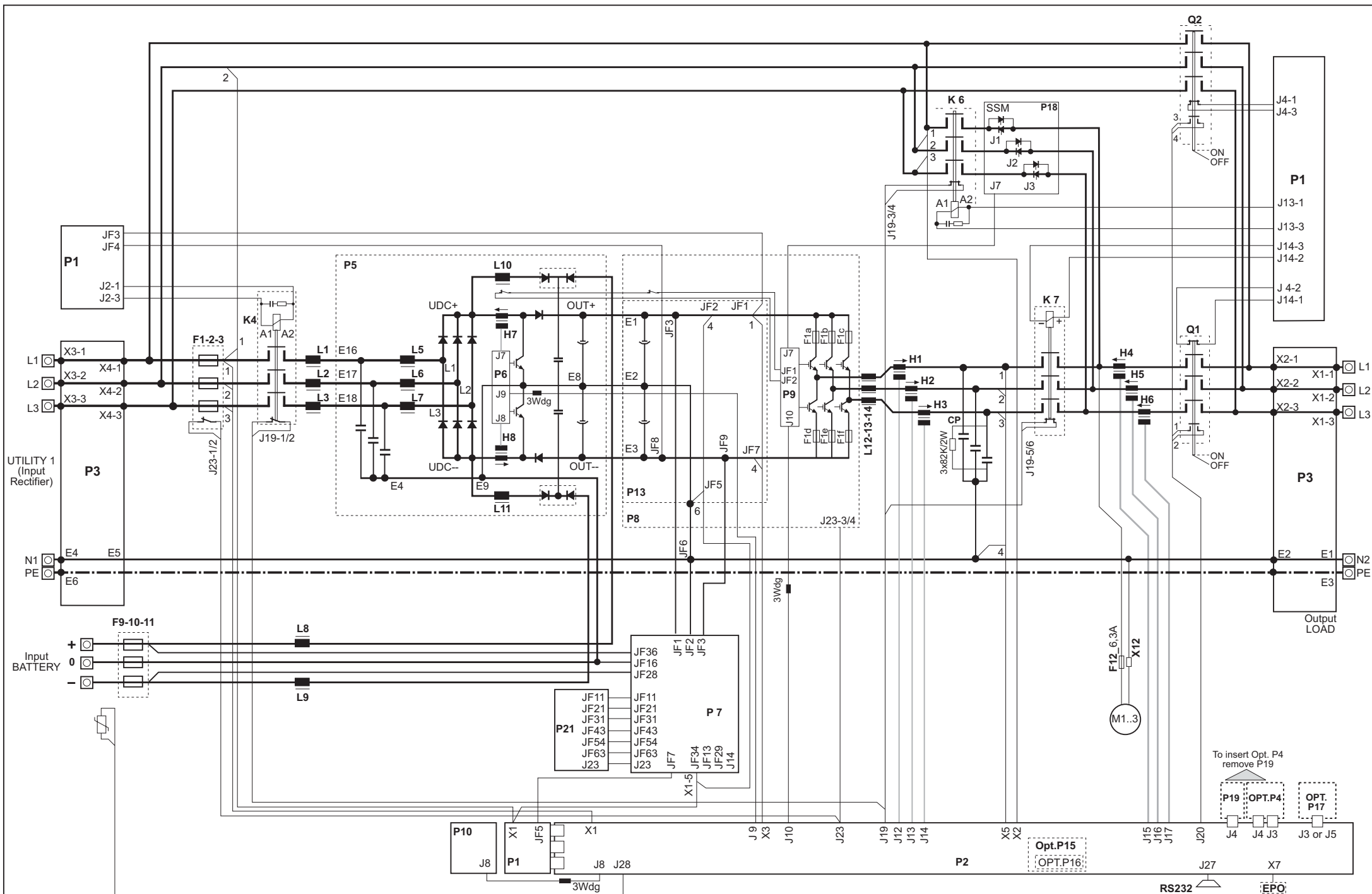
1	A-1303	04.05.09	5			Drawn by	Luchetta	13.03.2008
2			6			Checked by	Cogliati	04.05.09
3			7			Status	RELEASE	04.05.09
4			8					
	Revision	Date		Revision	Date			



**LP33\_CE**  
10-40 kVA

REPLACE: Serie 4

SERIES	<b>5</b>	Code	<b>332103</b>	Page 1 of Pages 6
--------	----------	------	---------------	-------------------



1	A	04.05.09	5			Drawn by	Luchetta	13.03.2008
2			6			Checked by	Cogliati	04.05.09
3			7			Status	RELEASE	04.05.09
4	Revision	Date	8					

## UPS SCHEMATIC DIAGRAM STANDARD UPS

All rights for transmission, duplicating or reprinting reserved



GE Digital Energy

**LP33\_CE**  
10-30 kVA

REPLACE: Serie 4

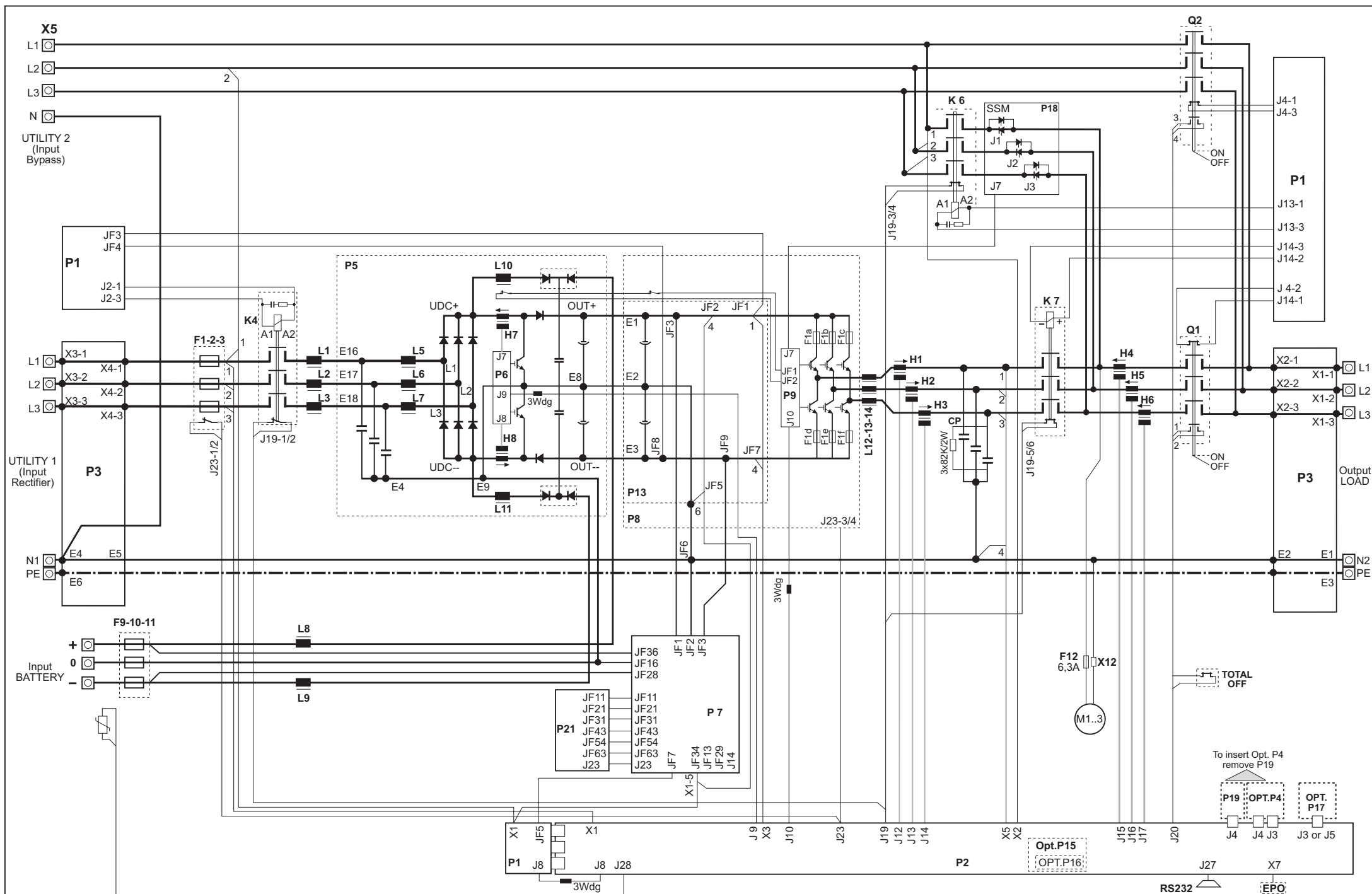
SERIES

**5**

Code

**332103**

Page 2  
of Pages 6



1	A	04.05.09	5			Drawn by	Luchetta	13.03.2008
2			6			Checked by	Cogliati	04.05.09
3			7			Status	RELEASE	04.05.09
4	Revision	Date	8	Revision	Date			

## UPS SCHEMATIC DIAGRAM DUAL INPUT UPS

All rights for trasmission, duplicating or reprinting reserved



GE Digital Energy

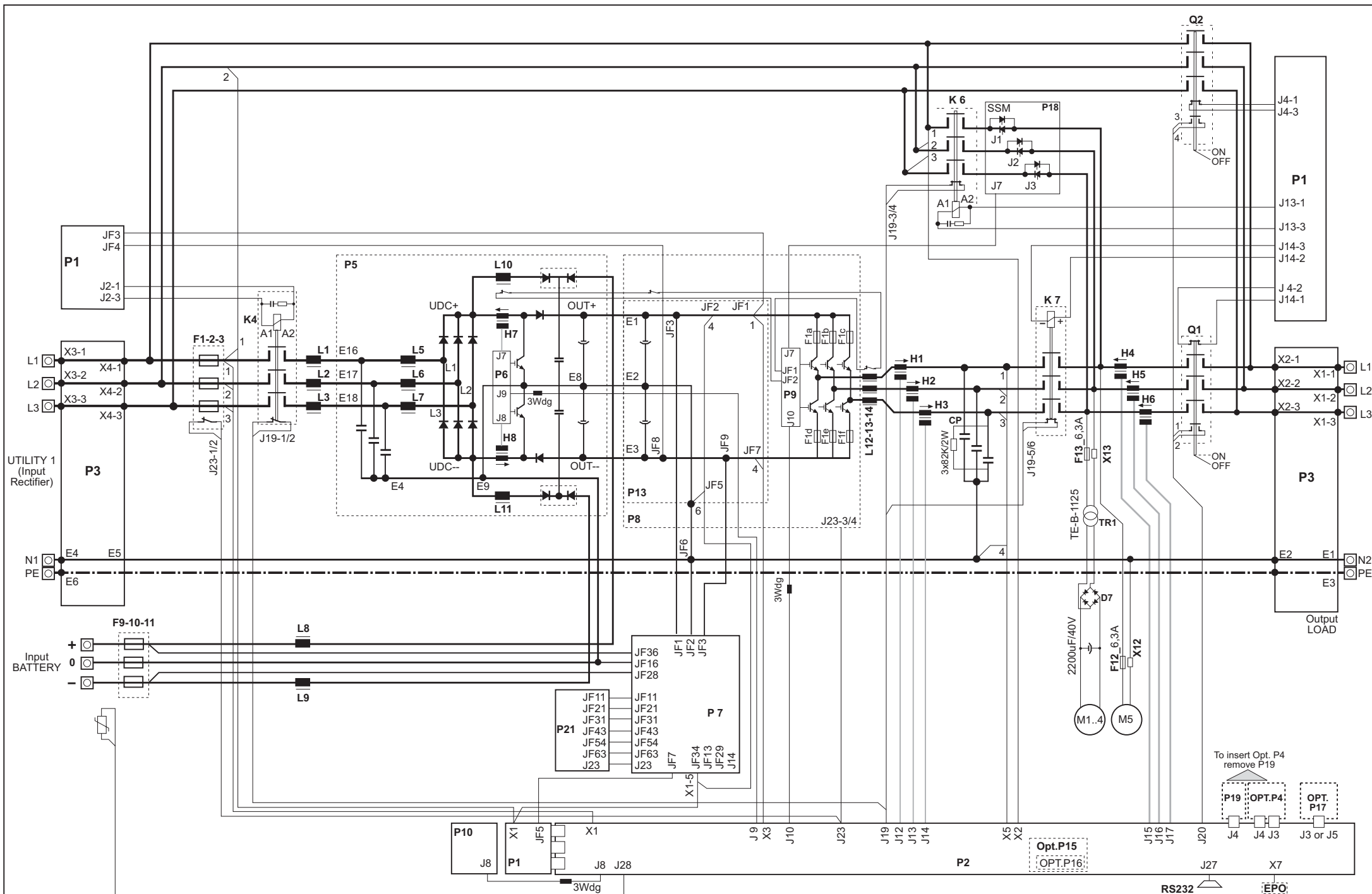
**LP33\_CE**  
10-30 kVA

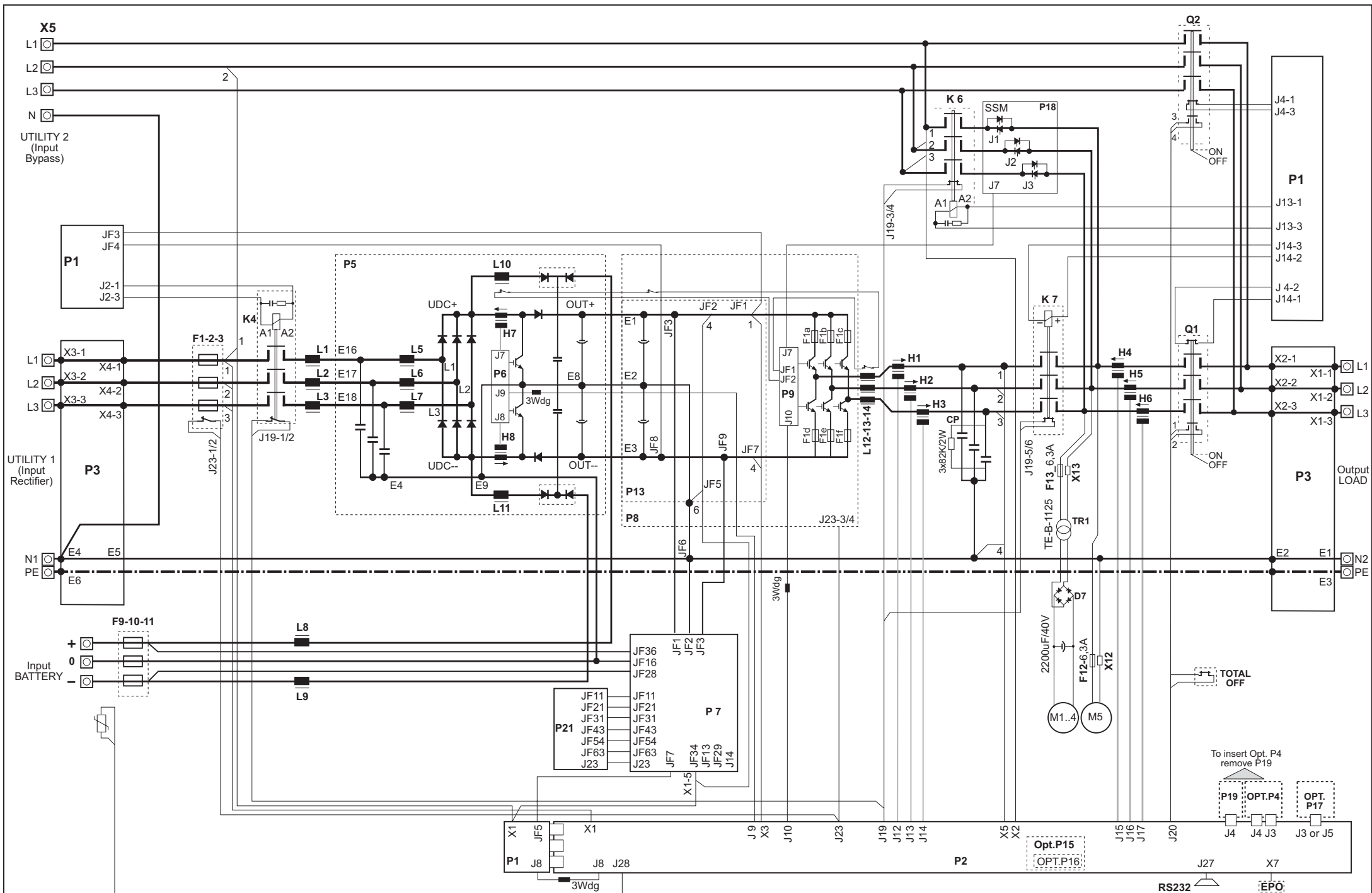
REPLACE: Serie 4

SERIES **5**

Code **332103**

Page 3  
of Pages 6





1	A-1303	04.05.09	5			Drawn by	Luchetta	13.03.2008
2			6			Checked by	Cogliati	04.05.09
3			7			Status	RELEASE	04.05.09
4			8					
Revision	Date		Revision	Date				

# UPS SCHEMATIC DIAGRAM DUAL INPUT UPS

All rights for transmission, duplicating or reprinting reserved



GE Digital Energy

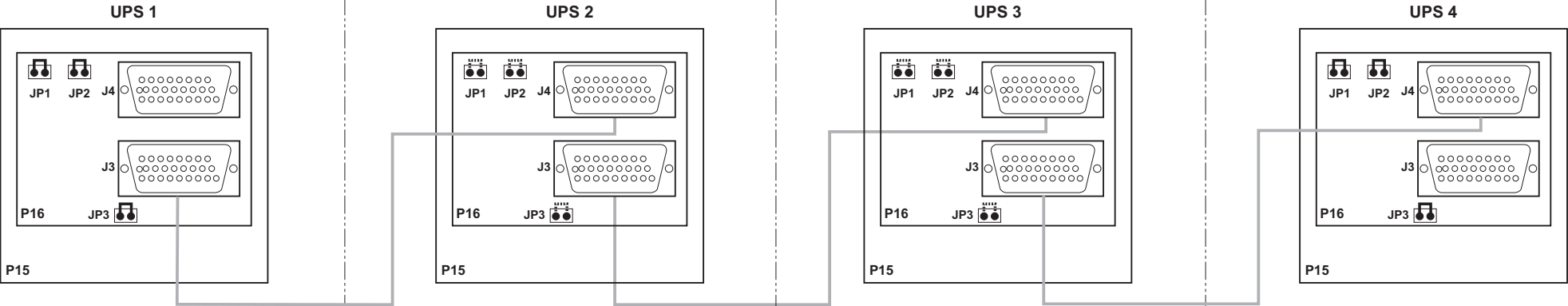
**LP33\_CE**  
40 kVA

REPLACE: Serie 4

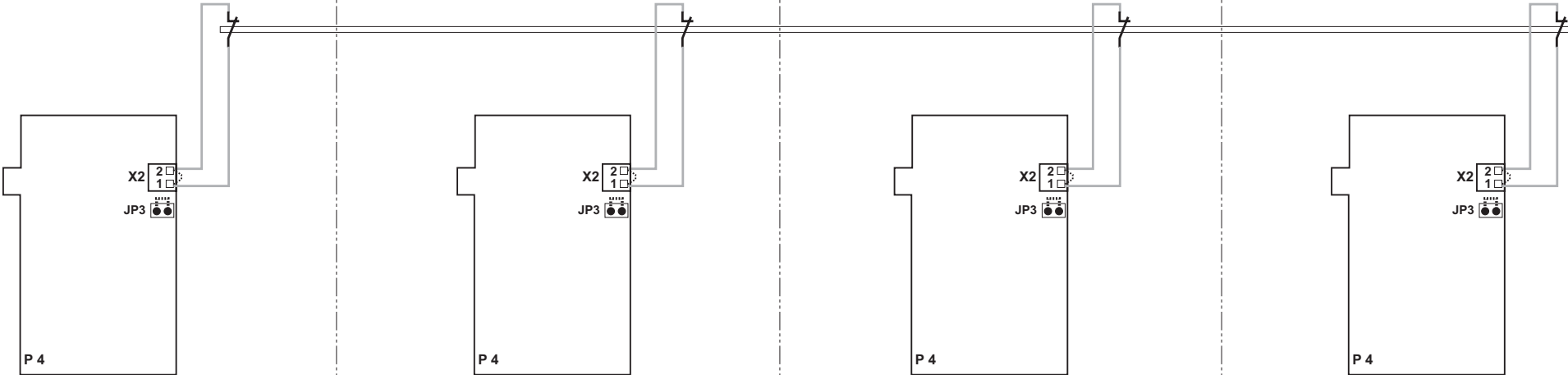
SERIES	<b>5</b>	Code	<b>332103</b>	Page 5 of Pages 6
--------	----------	------	---------------	----------------------

RPA Connections

NOTE: Insert JP1 - JP2 - JP3 on P15 for FIRST and LAST UPS



Emergency OFF



NOTE: Remove Bridge X2-1/2 and jumper JP3

1	A	04.05.09	5			Drawn by	Luchetta	13.03.2008
2			6			Checked by	Cogliati	04.05.09
3			7			Status	RELEASE	04.05.09
4			8					
Revision		Date	Revision		Date			

Options: - RPA Connections  
- Emergency OFF

All rights for trasmission, duplicating or reprinting reserved



LP33\_CE  
10-40 kVA

REPLACE: Serie 4		
SERIES	5	Code 332103
		Page 6 of Pages 6