
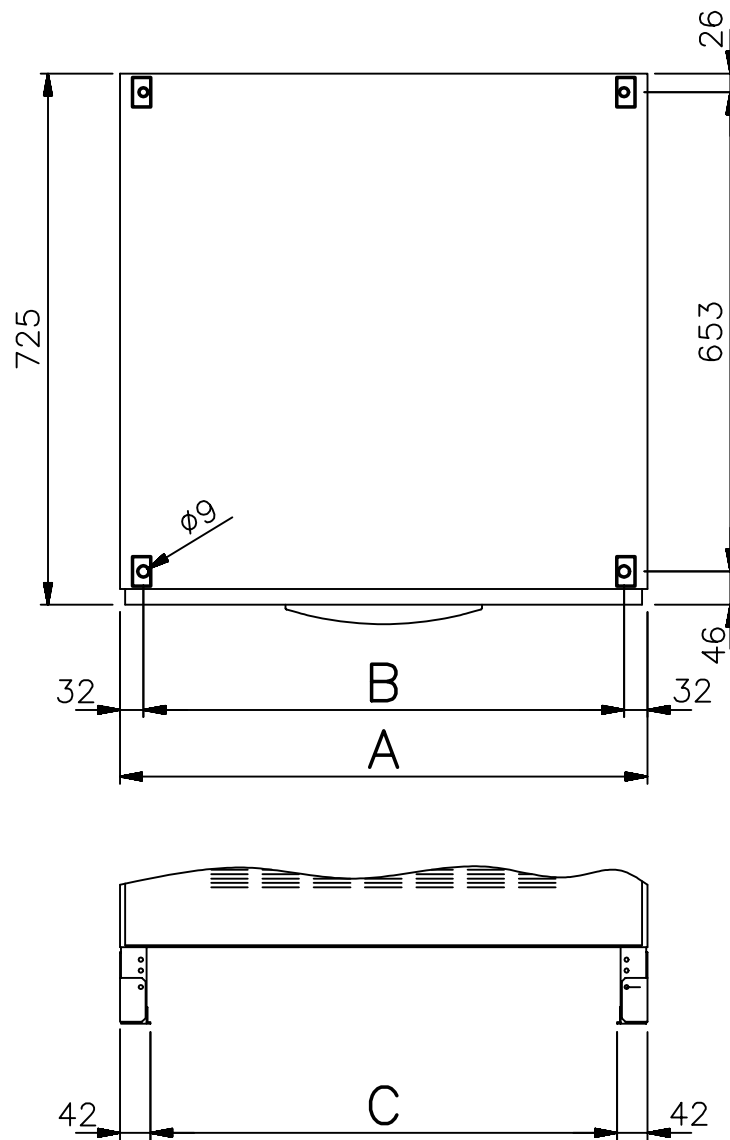



REPLACE		SERIES	DATE	NAME
LP33 Series CE 10-20-30-40-60-80-100-120kVA BATTERY FUSE BOX / BATTERIESHERUNGSKASTEN BOX FUSIBILI BATTERIA / BOX FUSIBLES BATTERIE		DES.	24.02.05	ggrassi
		CONTR.		
		MOD.	08.10.07	ggrassi
 GE Consumer & Industrial SA    CH-6595 Riazzino    Locarno		Pag. 1	391 704	
		1 Pag.		

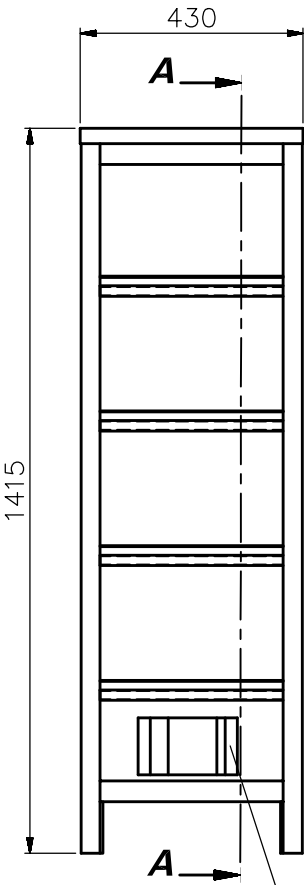


kVA	Cabinet / Schrank / Armadio / Armoire H= 1415/1815 mm							
	UPS				OPTIONS			
	A	B	C		A	B	C	
40	600	536	516		430 600 780	366 536 716	346 516 696	
60								
80								
100	720	656	636					
120								

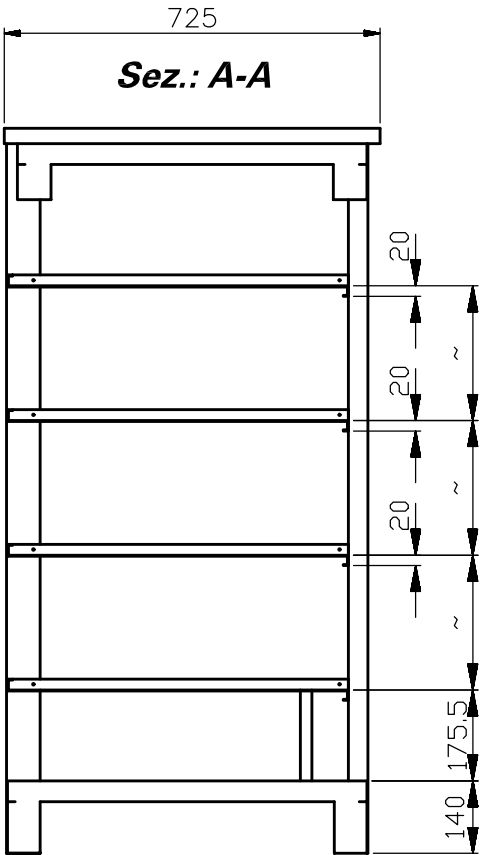
MODIFICATIONS RESERVED  
ÄNDERUNGEN VORBEHALTEN  
MODIFICHE RISERVATE  
MODIFICATIONS RESERVEES

REPLACE	SERIES	DATE	NAME
<b>LP33 Series CE</b> <b>40-60-80-100-120kVA</b> CABINET BASE-DIMENS. / AUSFUEHRUNG DES SCHRANK-SOCKELS DIMENSIONI BASE-ARMADIO / DIMENSION SOCLE ARMOIRES		DES.	06.04.05 ggrassi
		CONTR.	
		MOD.	
 <b>GE Digital Energy</b>		Pag.	391 754
CH-6595 Riazzino Locarno		Pag.	

Front view

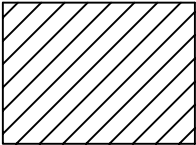
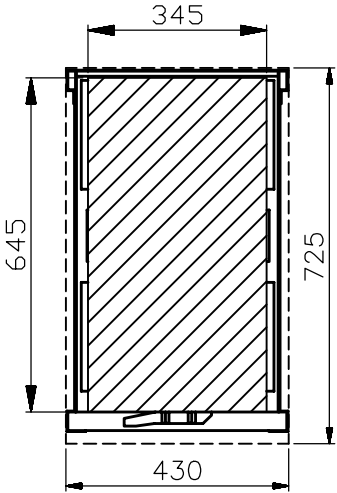


Side view



OPTION BATTERY FUSES  
OPTION BATT. SICHERUNGEN  
OPZIONE FUSIBILI BATTERIA  
OPZION FUSIBLES BATTERIE

Top view



SPACE FOR BATTERIES  
PLATZ FUER BATTERIEN  
SPAZIO PER LE BATTERIE  
PLACE POUR LES BATTERIES

MODIFICATIONS RESERVED  
AENDERUNGEN VORBEHALTEN  
MODIFICHE RISERVATE  
MODIFICATIONS RESERVEES

SPACE FOR BATTERIES  
PLATZ FUER BATTERIEN  
SPAZIO PER LE BATTERIE  
PLACE POUR LES BATTERIES



GE Digital Energy

CH-6595 Riazzino Locarno

LP33 Series CE  
BATTERY CABINET  
430x725X1415

REPLACE

SERIES

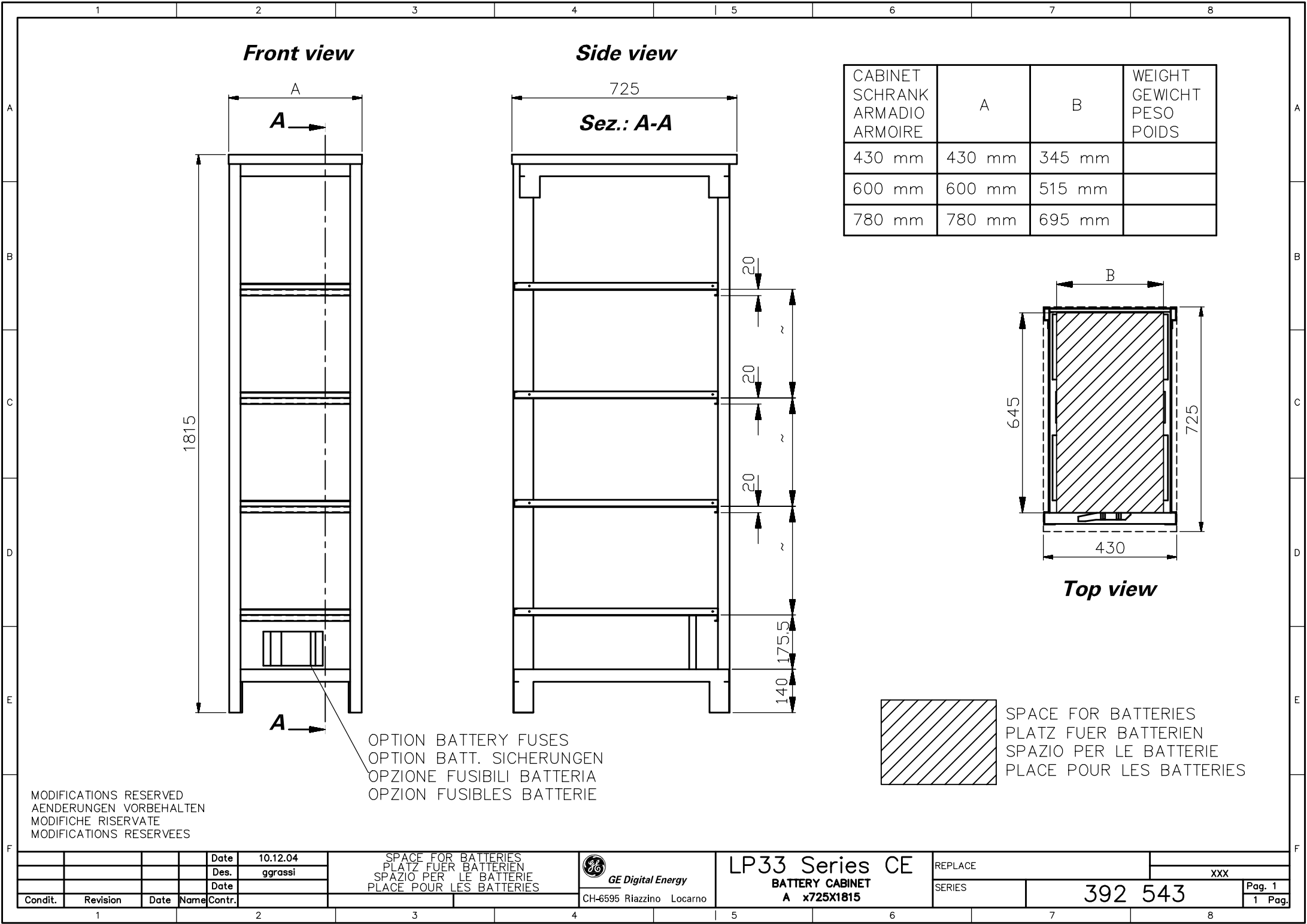
392 533

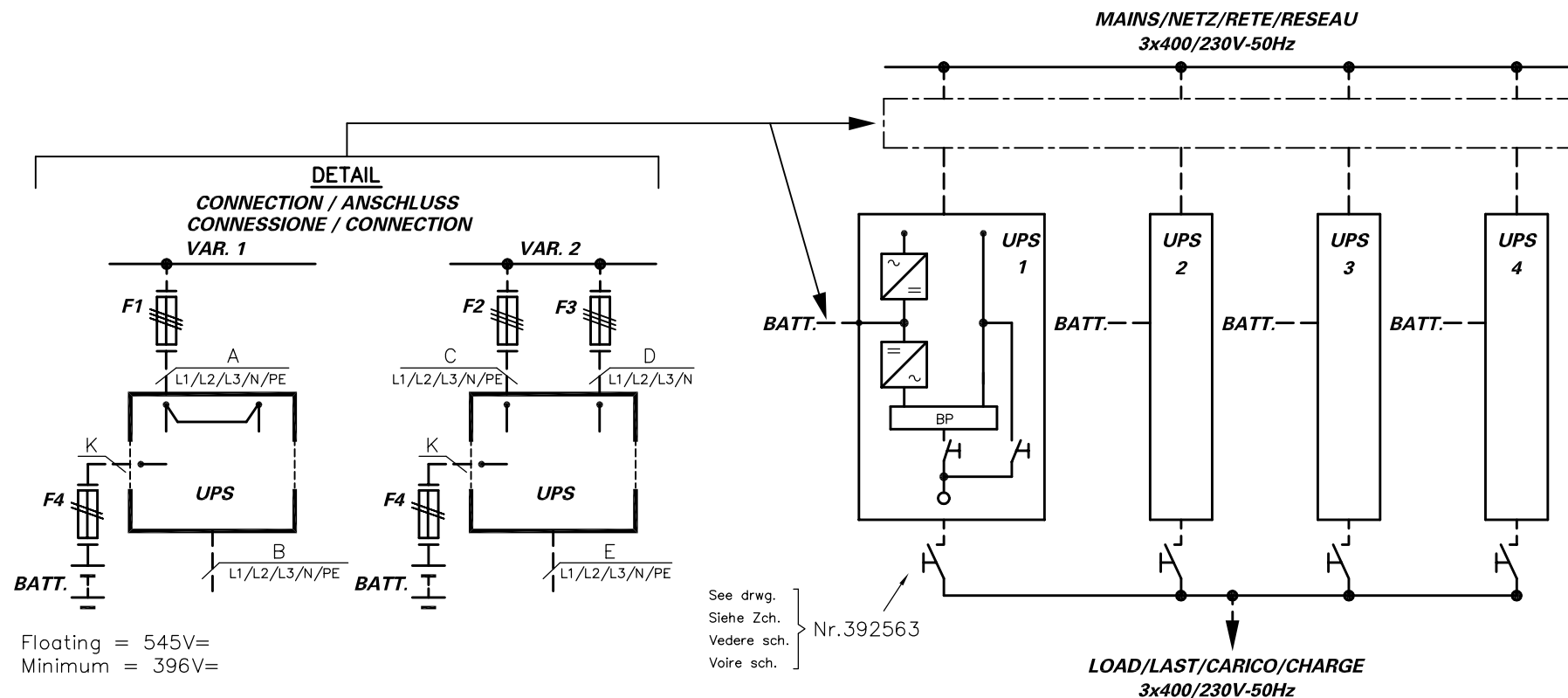
XXX

Pag. 1

1 Pag.

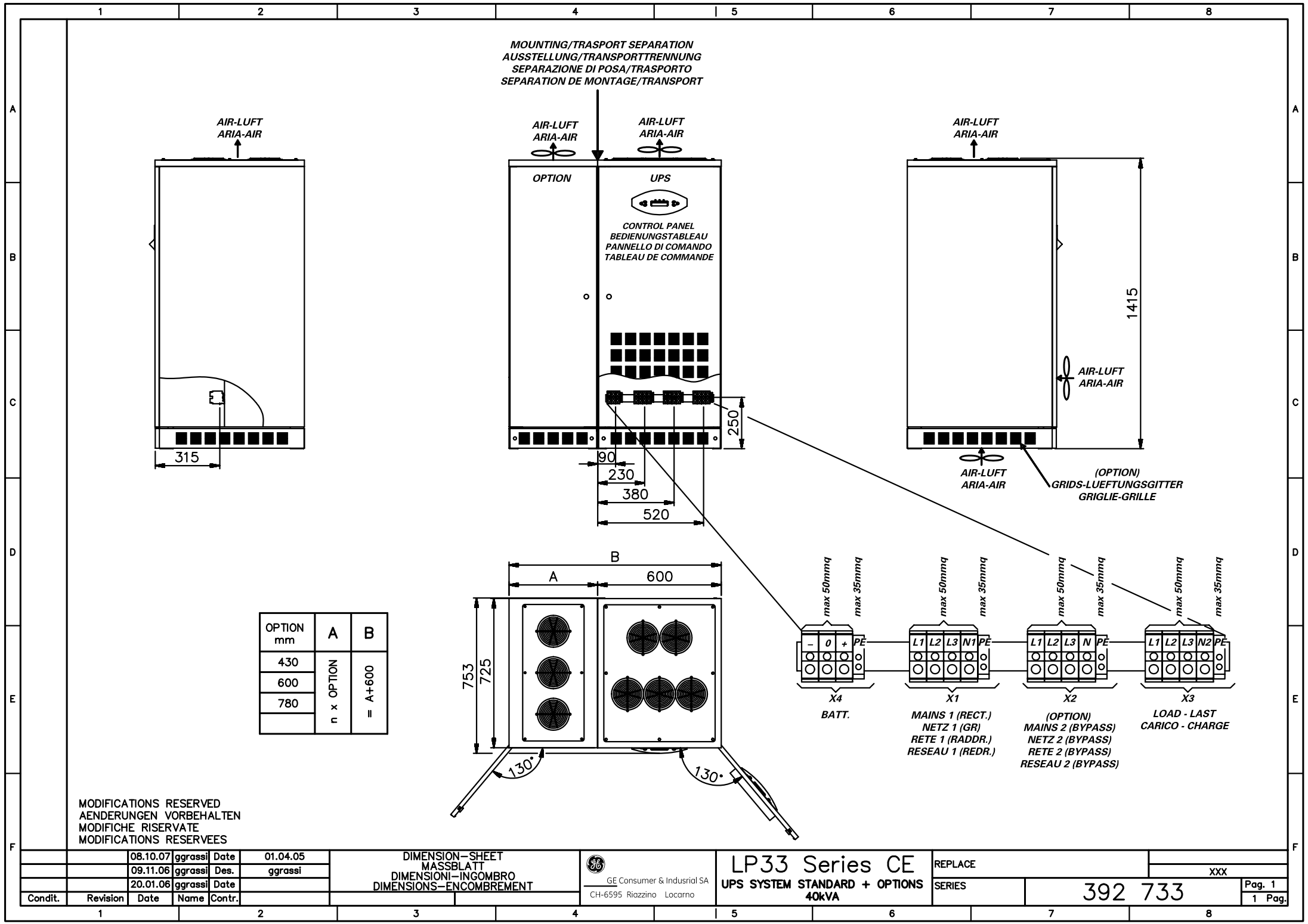
				Date	10.12.04
				Des.	ggrassi
				Date	
Condit.	Revision	Date	Name	Contr.	





MODIFICATIONS RESERVED  
ÄNDERUNGEN VORBEHALTEN  
MODIFICHE RISERVATE  
MODIFICATIONS RESERVEES





OPTION mm	A	B
430	OPTION n x	A+600 =
600		
780		

MODIFICATIONS RESERVED  
ÄNDERUNGEN VORBEHALTEN  
MODIFICHE RISERVATE  
MODIFICATIONS RESERVEES

DIMENSION-SHEET  
MASSBLATT  
DIMENSIONI-INGOMBRO  
DIMENSIONS-ENCOMBREMENT



GE Consumer & Industrial SA  
CH-6595 Riazano Locarno

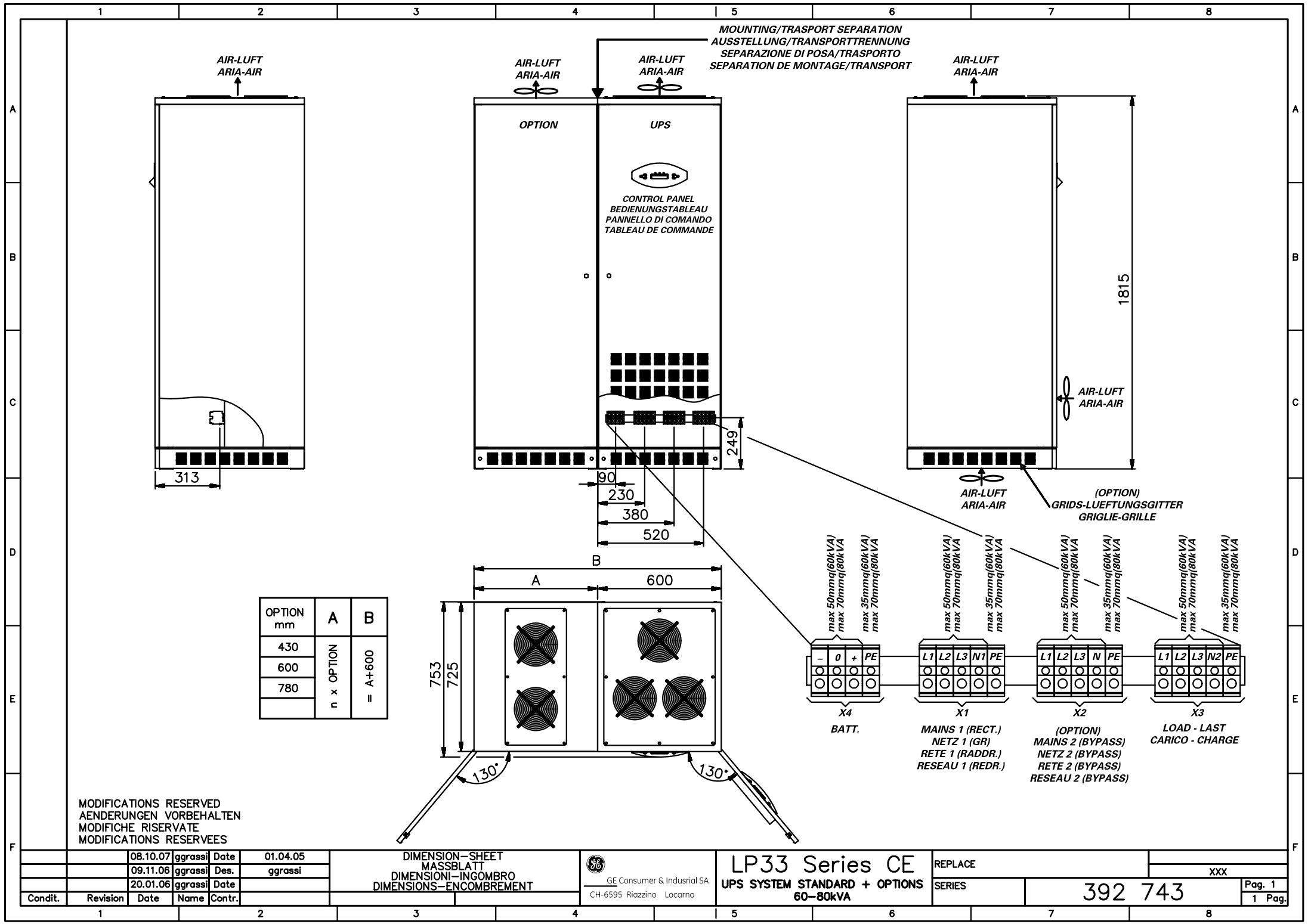
LP33 Series CE  
UPS SYSTEM STANDARD + OPTIONS  
40kVA

REPLACE  
SERIES

392 733

XXX


Pag. 1  
1 Pag.



MODIFICATIONS RESERVED  
ÄNDERUNGEN VORBEHALTEN  
MODIFICHE RISERVATE  
MODIFICATIONS RESERVEES

	08.10.07	ggrassi	Date	01.04.05
	09.11.06	ggrassi	Des.	ggrassi
	20.01.06	ggrassi	Date	
Condit.	Revision	Date	Name	Contr.

DIMENSION-SHEET  
MASSBLATT  
DIMENSIONI-INGOMBRO  
DIMENSIONS-ENCOMBREMENT

 GE Consumer & Industrial SA  
CH-6595 Riazzino Locarno

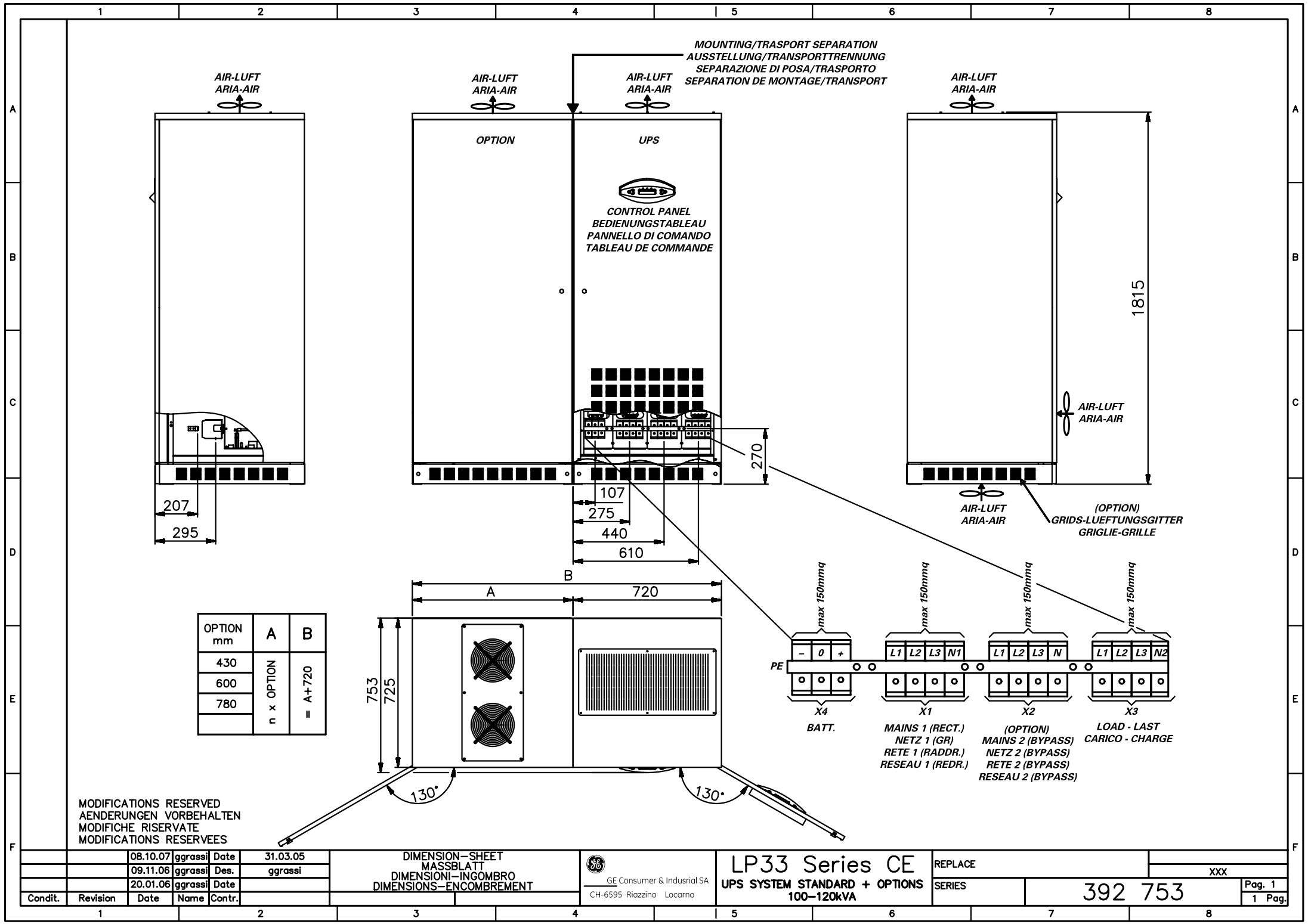
**LP33 Series CE**  
**UPS SYSTEM STANDARD + OPTIONS**  
**60-80kVA**

REPLACE  
SERIES

**392 743**


XXX  
Pag. 1  
1 Pag.





	08.10.07	ggrassi	Date	31.03.05
	09.11.06	ggrassi	Des.	ggrassi
	20.01.06	ggrassi	Date	
Condit.	Revision	Date	Name	Contr.

DIMENSION-SHEET  
MASSBLATT  
DIMENSIONI-INGOMBRO  
DIMENSIONS-ENCOMBREMENT

  
GE Consumer & Industrial SA  
CH-6595 Riazino Locarno

**LP33 Series CE**  
**UPS SYSTEM STANDARD + OPTIONS**  
**100-120kVA**

REPLACE  
SERIES

**392 753**

